

LIVESTOCK AND FISHERIES STATISTICS OF NEPAL

2079/80 (2022/23)



Government of Nepal

Ministry of Agriculture and Livestock Development

Department of Livestock Services

Hariharbhawan, Lalitpur, Nepal

LIVESTOCK AND FISHERIES STATISTICS OF NEPAL

2079/80 (2022/23)



Government of Nepal

Ministry of Agriculture and Livestock Development

Department of Livestock Services

Animal Genetic Resources and Economic Analysis Division

Livestock Statistics Management and Economic Analysis Section

Hariharbhawan, Lalitpur, Nepal

Publisher

Government of Nepal

Ministry of Agriculture and Livestock Development

Department of Livestock Services

Animal Genetic Resources and Economic Analysis Division

Livestock Statistics Management and Economic Analysis Section

Hariharbhawan, Lalitpur, Nepal

Phone No. : 977-1-5422056

977-1-5522059

Website : www.dls.gov.np

E-mail : statistics@dls.gov.np

: dg@dls.gov.np

June 2024



Government of Nepal
Ministry of Agriculture & Livestock Development
Department of Livestock Services
Harihar Bhawan, Lalitpur

5421610 | 5444725
5422056 | 5522059
5425733 | 5350717
5431007 | 5350719

Website: www.dls.gov.np
Email: dg@dls.gov.np (DG)
planning@dls.gov.np

Ref.

FOREWORD

The Department of Livestock Services (DLS) has been annually publishing "Livestock and Fisheries Statistics of Nepal". This publication reflects the overall status and performance of the livestock sector in Nepal. It summarizes basic information on the livestock population and their primary products. For the preparation of this document, information has also been extracted from the official publications of other agencies.

I would like to express my sincere thanks to the Provincial Directorates of Livestock and Fisheries Development from all provincial governments, and other organizations for sharing primary data to make this publication possible. The Livestock Statistics Management and Economic Analysis Section of DLS deserves special thanks for the efforts to collect and analyze data for the preparation of this publication. I would like to appreciate and acknowledge Mr. Shyam Sundar Yadav, Livestock Development Officer for his hard work in data tabulation, processing, and triangulation. My sincere thank goes to Dr. Chandra Dhakal, Senior Livestock Development Officer for his contribution to data analysis and triangulation. I equally acknowledge Dr. Sulochana Shrestha, DDG and Division Chief of the Animal Genetic Resource and Economic Analysis Division for her efforts in bringing out this publication in this form.

I would like to offer my hearty acknowledgment and appreciation to the Animal Genetic Resources and Economic Analysis Division team for their tireless efforts in bringing out this publication in this form.

I believe that this publication will serve as an official source of livestock statistics for policymakers, academia, researchers, farmers, business and industries, and other related stakeholders.

I look forward to receiving your valuable comments and suggestions for further improving our future publications.

June 2024

Dr. Umesh Dahal
Director General
Department of Livestock Services



Government of Nepal
Ministry of Agriculture & Livestock Development
Department of Livestock Services
Harihar Bhawan, Lalitpur

5421610 | 5444725
5422056 | 5522059
5425733 | 5350717
5431007 | 5350719

Website: www.dls.gov.np
Email: dg@dls.gov.np (DG)
planning@dls.gov.np

Ref.

PREFACE

The contribution of agriculture to GDP suggests that Nepal still enjoys an agrarian economy. Although, the notion is true, nevertheless, the figures available from various government agencies, various development partners, and scholars vary greatly. The official data sources for the obvious facts and figures related to the issue, among others, are the National Statistics Office, Ministry of Agriculture and Livestock Development, and Department of Livestock Services. Interestingly, the statistical information maintained by these agencies keeps discrepancies and largely creates a state of confusion among planners, researchers, overseas development agencies, and the general public. Also, it creates a state of dilemma leading to a masking effect on the tremendous growth potential of the livestock sub-sector in the Nepalese economy in general and the Nepalese agriculture economy in particular. Therefore, harmonization of the statistical data available to various public agencies is essential so that the incredible policies in livestock sector are possible.

The Livestock and Fisheries Statistics of Nepal is a comprehensive publication of the Department of Livestock Services containing updated data and information on the Nepalese livestock and fisheries sectors. This publication has been prepared based on the information received from various sources such as the National Statistics Office, the Provincial level Directorate of Livestock and Fisheries Development in the provinces, district-level offices under the directorates, and other governmental and non-governmental organizations. In addition, various reports and articles have also been considered as secondary sources of information.

Animal Genetic Resource and Economic Analysis Division under the Department of Livestock Services is grateful to all the contributors for their assistance in preparing this publication. I would like to extend my sincere appreciation to Mr. Shyam Sundar Yadav and his team for their continuous efforts in data processing and management.

I strongly believe that this publication would be valuable to those involved in planning, research, and academics among others. We are hopeful in receiving constructive feedback from the users of this publication that would certainly help us improve the present work in the forthcoming days.

June 2024

Dr. Vinay Kumar Karna
Deputy Director-General

TABLE OF CONTENTS

LIST OF TABLES	ix
ACRONYMS AND ABBREVIATIONS.....	x
DEPARTMENT OF LIVESTOCK SERVICES	11
Background	11
Goal	11
Vision	11
Objectives.....	11
Strategies.....	12
Organizations	13
METHODOLOGY OF DATA COLLECTION, TABULATION.....,	15
FIGURES OF NEPAL	17
LIVESTOCK POPULATION AND PRODUCTION	21
FISHERY	47
LIVESTOCK BREEDING	61
MISCELLANEOUS	77
Annex 1: Organizational Structure of DLS.....	91

LIST OF TABLES

Table 1: Livestock Population over the Last Twenty-Two Years.....	23
Table 2: Annual Production of Livestock Products over the Last Twenty-Two Years ..	25
Table 3: District-wise Livestock Population, 2079/80 (2022/23).....	27
Table 4: District-wise Milking Animal Population and Milk Production, 2079/80 (2022/23) ..	29
Table 5: District-wise Meat Production, 2079/80 (2022/23)	32
Table 6: District-wise Egg Production by 2079/80 (2022/23).....	35
Table 7: District-wise Wool Production, 2079/80 (2022/23).....	38
Table 8: District-wise Yak /Nak/Chauri Population, 2079/80 (2022/23).....	40
Table 9: District-wise Rabbit Population, 2079/80 (2022/23).....	41
Table 10: District-wise Horses/Asses Population, 2079/80 (2022/23)	44
Table 11: Sources of Fish Production (FY 2073/74 to 2079/80)	49
Table 12: Pond Fish Production (FY 2007/08 to 2022/23, AD)	56
Table 13: District-wise Fish Production (Pond Aquaculture), 2078/79 (2021/22)	57
Table 14: Semen Imported from Different Countries (1985 to 2023, AD).....	63
Table 15: Semen Imported Data of Different Animal Species (1985 to 2023, AD)	65
Table 16: National AI Coverage (FY 2075/76 to 2079/80).....	67
Table 17: Semen Production, Distribution and AI (FY 2050/51 to 2079/80)	68
Table 18: Species-wise AI (FY 1995/96 to 2022/23, AD)	70
Table 19: AI Conception Rate (FY 2006/07 to 2022/23, AD)	71
Table 20: Number of AI Centers and Inseminators.....	72
Table 21: District-wise AI FY 2079/780 (2022/23).....	73
Table 22: No. of Animal Dead due to Disease Outbreak in FY 2079/80 (2022/23).....	79
Table 23: Vaccines Produced by NVPL (FY 2074/75 to 2079/80)	81
Table 24: Feed Sample Tested Species-wise (FY 2075/76 to 2079/80).....	82
Table 25: Veterinary Drugs and Residues Testing (FY 2077/78 to 2079/80)	84
Table 26: Testing of Veterinary Drugs and Vaccines Using Different Methods	86
Table 27: Import and Export Recommendations Provided by the DLS	87
Table 28: Different Samples Received at CVL, VLs, and NADIL.....	88
Table 29: Preliminary Diagnostic Testing Using Post-mortem for Dead Animal.....	88
Table 30: Different diseases diagnosed at CVL, VLs, and NADIL.....	89

ACRONYMS AND ABBREVIATIONS

%	: Percent
AD	: Anno Domini
AGDP	: Agriculture Gross Domestic Product
AGR & EAD	: Animal Genetic Resources and Economic Analysis Division
AI	: Artificial Insemination
BQ	: Black Quarter
BS	: Bikram Sambat
CP	: Crude Protein
DLS	: Department of Livestock Services
CVL	: Central Veterinary Laboratory
DOA	: Department of Agriculture
ELISA	: Enzyme-Linked Immunosorbent Assay
FY	: Fiscal Year
GDP	: Gross Domestic Product
Ha.	: Hectare
HF	: Holstein Friesian
HS	: Hemorrhagic Septicemia
Kg.	: Kilogram
Km	: Kilometer
LSM & EAS	: Livestock Statistics Management and Economic Analysis Section
m ³	: Cubic meter
MoALD	: Ministry of Agriculture and Livestock Development
Mt.	: Metric Ton
NADIL	: National Avian Diseases Investigation Laboratory
n.e.c.	: Not Elsewhere Counted
NA	: Not Available
NAFLQML	: National Animal Feed and Livestock Quality Management Laboratory
NLRMPO	: National Livestock Resources Management and Promotion Office
No.	: Number
NVPL	: National Vaccine Production Laboratory
PPR	: Peste des Petits Ruminants
Sq.	: Square
VL	: Veterinary Laboratory
WOAH	: World Organization for Animal Health
WTO	: World Trade Organization

DEPARTMENT OF LIVESTOCK SERVICES

Background

The Department of Livestock Services (DLS) under the Ministry of Agriculture and Livestock Development strives to implement all kinds of programs and activities related to livestock promotion and services in Nepal. The livestock sector contributes to about 24.01 % of AGDP.

The Department of Livestock Services started its activity from a veterinary dispensary in 1939 AD. In 1966 AD, the department was named as the Department of Livestock Development and Animal Health. Livestock development programs like animal production, animal health, animal nutrition, breeding, management, and livestock extension were implemented through this department. In 2049 BS, DLS was merged into the Department of Agriculture (DOA). However, due to managerial complexities, in 2052 BS, the DLS separated from DOA. As per the decision made by the Government of Nepal dated 2075/03/32, the DLS is part of the Ministry of Agriculture and Livestock Development in the federal framework.

After the promulgation of the Nepalese constitution in 2072 BS, the country entered into a federal system. After the decision of the Government of Nepal on March 32, 2075, many government agencies were reorganized. At the federal level, under the Department of Livestock Services, there are 35 organizations. The Animal Genetic Resources and Economic Analysis Division under the Department of Livestock Services, has been working as the focal point for livestock and fisheries statistics.

Goal

The overall goal is to contribute to poverty reduction in the country through livestock development.

Vision

To make food sovereign and prosperous Nepal through sustainable livestock development.

Objectives

- To increase livestock production and productivity and eliminate the problem of malnutrition.
- Improve the economic and social condition of the poor, socially disadvantaged people and women through improved livestock farming.
- Develop and improve existing livestock farming as the main income source of the farm family and help in maintaining ecological balance and conservation.
- To control livestock diseases for food security and protection of and public health.
- Support the production of exportable and import-substitutable animal products.

- Involve the private sector in commercial livestock farming. Development and maintenance of resource centers. and market management.
- Increase self-employment opportunities by promoting animal husbandry, livestock farming and trade.
- Expansion of quality control services for the livestock sector, livestock industry and consumers.
- Identify, conserve, promote and develop endangered native livestock breeds.

Strategies

- Produce livestock and poultry vaccines within the country.
- Involve private sectors in animal treatment and technical consultancy services.
- Control and eradication of epidemic animal diseases.
- Providing diagnostic services for animal diseases.
- Conduct animal disease investigations and surveillance.
- Apply quality control systems for veterinary drugs and vaccines.
- Implement animal quarantine services effectively.
- To control zoonotic diseases.
- To implement the Slaughterhouse and Meat Inspection Act to support the private sector in establishing and operating slaughterhouses.
- Manage and maintain the quality of animal care services provided by the private sector
- Modernization of animal health services in accordance with WOA and WTO standards.
- Formation and maintenance of nucleus herds of indigenous/improved animals in Animal Genetic Resource Centre and their distribution to farmers.
- Manage a quality control system for livestock feed and raw materials used in feed. Increase the supply of pasture and fodder by making community and leased forests available to user groups.
- Utilize communal pastures through user groups to increase productivity.
- Private sector involvement in the production and marketing of high-quality grass seeds.
- Help establish livestock markets where appropriate, by providing the necessary technical and infrastructural support and advocating for private sector intervention.
- Organize training, workshops and seminars related to animal husbandry services. Develop and revise training curricula and conduct the training need assessment.

Organizations

Under the DLS, there are the following federal government organizations:

1. Central Referral Veterinary Hospital, Kathmandu
2. Central Veterinary Laboratory, Kathmandu
 - A. Veterinary Laboratory, Biratnagar
 - B. Veterinary Laboratory, Janakpur
 - C. Veterinary Laboratory, Pokhara
 - D. Veterinary Laboratory, Surkhet
 - E. Veterinary Laboratory, Dhangadhi
3. National Vaccine Production Laboratory, Kathmandu
4. Veterinary Standards and Drug Regulatory Laboratory, Kathmandu
5. SAARC Regional Support Unit, Kathmandu
6. Foot and Mouth Disease and TADs Investigation Laboratory, Kathmandu
7. National Avian Disease Investigation Laboratory, Chitwan
8. Animal Quarantine Office, Kakadbhitta
9. Animal Quarantine Office, Biratnagar
10. Animal Quarantine Office, Janakpur
11. Animal Quarantine Office, Birgunj
12. Animal Quarantine Office, Bhairahawa
13. Animal Quarantine Office, Nepalgunj
14. Animal Quarantine Office, Kathmandu
15. Animal Quarantine Office, Gaddachauki
16. Central Fisheries Promotion and Conservation Center, Kathmandu
17. Fisheries Human Resource Development and Technology Testing Center, Janakpur
 - A. Natural Reservoir Fish Promotion and Conservation Center, Hetauda
 - B. Pure Breed Fish Conservation and Promotion, and Resource Center Bhairahawa
18. National Livestock Resource Management and Promotion Office, Hariharbhawan
19. National Animal Feed and Livestock Quality Management Laboratory, Hariharbhawan

20. National Livestock Breeding Office, Pokhara
21. National Livestock Breeding Office, Lahan
22. National Livestock Breeding Office, Nepalgunj
23. Rhizobium and Forage Seeds Laboratory, Janakpur
24. Genetic Resource Centers / Farms
 - A. Yak Genetic Resource Center, Syangboche
 - B. Cattle Genetic Resource Center, Jiri
 - C. Sheep Genetic Resource Center, Pansaykhola
 - D. Goat Genetic Resource Center, Budhitola
 - E. Forage Seeds Genetic Resource Center, Ranjitpur

The DLS's organizational structure and organizations under it are detailed in Annex.

In addition, there are provincial ministries, Directorate of livestock and fisheries, Veterinary hospital and livestock service expert centers under the provincial government and livestock section under the local government.

METHODOLOGY OF DATA COLLECTION, TABULATION, TRIANGULATION AND VALIDATION

The DLS has been annually publishing “Livestock Statistics of Nepal” which has been renamed as “Livestock and Fisheries Statistics of Nepal” in the FY 2078/79 BS. This publication aims to summarize and reflect on the overall status and performance of the livestock and fisheries sector of the country.

To tabulate, triangulate, and validate the final data of the livestock population and production a task force namely “Livestock Statistics Management Task Force” under the Coordination of the Division Chief of the Animal Genetic Resources and Economic Analysis Division was formed with the representative from Senior Livestock Development Officer, MoALD and DLS, Livestock Development Officers from NLRMPO and DLS, and Statistics Officer from National Statistics Office.

The book is based on the use of empirical data from National Statistics, Kathmandu which was collected in 2078 and published in 2080 BS. Furthermore, the data provided by the offices under the DLS, Provincial ministries, Directorate of Livestock and Fisheries Development, Veterinary Hospital and Livestock Services Expert Centers, Livestock and Fisheries Farms and Resource Centers, Livestock Services Section of the Local government were also taken into consideration.

A series of steps were undertaken for the compilation and organization of the data. Initially, a data cleaning process was conducted to identify and rectify the errors and outliers by using a Box and Whisker. An Excel-based designated table containing herd structure; age and sex-wise population including dry and milking number, and herd dynamic variables; newly born, purchased, gift accepted, death including the number of animals that died due to outbreak, sold, gifted to others, and other entries as well as exits from the herd for the given period was used to estimate the end stock of the livestock population over the beginning population published by NSO. The various major variables were taken into account to estimate the livestock production; the productivity of local and improved cow and buffalo; and lactation period to estimate the milk production, offtake, live body weight, number of batches in case of broiler; and dressing coefficient of the livestock commodities to estimate the meat production; and productivity of backyard and commercial poultry to estimate the egg production.

Livestock production data were triangulated to ensure the reliability and validity of the estimated data. Multiple sources of the data were used to corroborate and cross-validate the estimated data. The reliability and accuracy of the figures were assessed by making comparisons to last year’s data. Internal validity was made with the interaction and consultation with the related experts.

The “Livestock Statistics Management Task Force” adhered to ethical principles, such as data anonymization and confidentiality.

Estimated data may have some limitations. The estimated data are based on the beginning stock of the population. The deviation in the beginning stock may lead to the deviation in the estimated figure. Additionally, assumptions were made regarding the accuracy and reliability of secondary data sources. Therefore, rigorous methodologies were used for data collection, compilation, triangulation, and validation to ensure the reliability, validity, and generalizability of statistical results.

FIGURES OF NEPAL

A. National Area by Ecological Belt (Sq. Km.)

S.N.	Particulars	Figures	Remarks
1.	National Area by Ecological Belt (Sq. Km.)	147181	100%
1.1	Mountain	51817	35%
1.2	Hill	61345	42%
1.3	Terai	34019	23%

Source: *Statistical Information on Nepalese Agriculture, 2078/79 (2021/22)*. Statistics and Analysis Section, Planning and Development Cooperation Division, Ministry of Agriculture and Livestock.

B. Information on Land use by various categories ('000 Ha.)

S.N.	Particulars	Figures	Remarks
1	Land Use ('000 Ha.)	14,718	100%
1.1	Agricultural Land Cultivated	3,091	21.00%
1.2	Agricultural Land Uncultivated	1,030	7.00%
1.3	Forest	4,268	29.00%
1.4	Shrub Land	1,560	10.60%
1.5	Grass Land and Pasture	1,766	12.00%
1.6	Water	383	2.60%
1.7	Others	2,620	17.80%

Source: *Statistical Information on Nepalese Agriculture, 2078/79 (2021/22)*. Statistics and Analysis Section, Planning and Development Cooperation Division, Ministry of Agriculture and Livestock Development.

C. Composition of Gross Domestic Product by ISIC Division (at Current price)

NSIC	Industrial Classification	Fiscal Year 2022/23 P (Percentage Contribution)	Remarks
A	Agriculture, Forestry and Fishing	24.12	

D. Contribution of Selected Agricultural Commodities on Agriculture GDP in FY 2079/80 (2022/23) at Current Prices.

S. N.	Commodities	Percentage Contribution	Remarks
A	Crop total	65.9600	
B	Livestock	24.0131	
	Raw milk of buffalo	7.2824	
	Buffalo meat	4.2329	
	Raw milk of cow	3.9501	
	Goats	3.1983	
	Excreta of animals useful for manure/fertilizer and fuel preparation	1.7064	
	Chickens	1.4475	
	Others	0.6952	
	Other hen eggs in shell, fresh	0.6917	
	Swine/ pigs	0.4172	
	Natural honey	0.1692	
	Sheep	0.0815	
	Other raw milk n.e.c.	0.0417	
	Other eggs from other birds in shell, fresh	0.0243	
	Excreta of animals useful for manure/fertilizer and fuel preparation	0.0153	
	Other birds (pigeon)	0.0139	
	Ducks	0.0120	
	Raw milk of sheep, goats	0.0104	
	Ostriches and emus	0.0098	
	Shorn wool, greasy, including fleece-washed shorn wool	0.0098	
	Turkeys	0.0018	
	Rabbits and hares	0.0013	
	Excreta of animals useful for manure/fertilizer and fuel preparation	0.0004	
	Excreta of animals useful for manure/fertilizer and fuel preparation	0.0001	

Source: *Selected Indicators of Nepalese Agriculture, 2023.* Statistics and Analysis Section, Planning and Development Cooperation Division, Ministry of Agriculture and Livestock Development.

E. Estimated Livestock Population, 2079/80 (2022/23)

S. N.	Particulars	Number	Remarks
1.	Cattle	4750329	
2.	Buffaloes	3081062	
3.	Sheep	501849	
4.	Goat	14541244	
5.	Pigs	1357507	
6.	Fowl (Standing Population)	65205250	
7.	Ducks	1325999	
8.	Milking Cow	916579	
9.	Milking Buffaloes	851272	
10.	Laying Hen	12725053	
11.	Laying Ducks	302473	
12.	Yak/ Nak/Chauri	53195	
13.	Rabbit	43192	
14.	Horses/Asses	17332	

F. Estimated Annual Production of Livestock and Fisheries Products of 2079/80 (2022/23)

S.N.	Particulars	Figures	Remarks
1.	Milk Production (Mt.)	2613843	
1.1	Cow Milk	1214046	
1.2	Buffalo Milk	1399797	
2.	Meat (Net) Production (Mt.)	430085	
2.1	Buff	116503	
2.2	Mutton (Sheep)	1874	
2.3	Chevon (Goat)	77162	
2.4	Pork	32533	
2.5	Chicken	200658	
2.6	Duck	1355	
3.	Egg Production ('000 Number)	1607333	
3.1	Hen Egg	1547103	
3.2	Duck Egg	60229	
4.	Wool Production (Kg.)	381106	
5.	Fish Production (Mt.)	113736	

G. Population of Nepal

S.N.	Particulars	Figures	Remarks
1	Total Population	29164578	100%
1.1	Male	14253551	48.96%
1.2	Female	14911027	51.04%
2	Population Growth Rate (Exponential Growth %)	0.92	

Source: *Nepal in Figures 2023*. National Statistics Office, Office of the Prime Minister and Council of Ministers, Government of Nepal.

H. Information on Livestock Holdings

S. N.	Particulars	Number of holdings	Percent (%)	Remarks
1.	Total Number of Livestock Holdings	3405014		
2.	Cattle	1708421	50.2	
3.	Buffalo	1417028	41.6	
4.	Yak / Nak / Chauri	9899	0.3	
5.	Sheep	72736	2.1	
6.	Goat	2440142	71.7	
7.	Pig	422501	12.4	
8.	Horse, Mules, and Donkey	7498	0.2	
9.	Poultry (Chicken)	1799134	52.8	
10.	Duck	190566	5.6	

Source: *National Sample Census of Agriculture, Nepal (2021/22)*. National Statistics Office, Office of the Prime Minister and Council of Ministers, Government of Nepal.

LIVESTOCK POPULATION AND PRODUCTION

Table 1: Livestock Population over the Last Twenty-Two Years*Unit: Number*

Category	Fiscal Year AD				
	2001/02	2002/03	2003/04	2004/05	2005/06
Cattle	6978690	6953584	6966436	6994463	7002916
Buffaloes	3700864	3840013	3952654	4081463	4204886
Sheep	840141	828286	824187	816727	812085
Goat	6606858	6791861	6979875	7153527	7421624
Pigs	934461	932192	935076	947711	960827
Fowl	21370420	22260700	23023979	22790224	23221439
Duck	408584	408311	405217	391855	392895
Milking Cow	852790	870589	888190	902286	903376
Milking Buffaloes	958530	988035	1015727	1050977	1084764
Laying Hen	6453860	6622558	6676954	6643350	6769050
Laying Duck	214090	213751	211838	183208	183690

Contd...

Table 1: Livestock Population over the Last Twenty-Two Years*Unit: Number*

Category	Fiscal Year AD				
	2006/07	2007/08	2008/09	2009/10	2010/11
Cattle	7044279	7090714	7175198	7199260	7226050
Buffaloes	4366813	4496507	4680486	4836984	4993650
Sheep	813621	809480	802993	801371	805070
Goat	7847624	8135880	8473082	8844172	9186440
Pigs	989429	1013359	1044498	1064858	1108465
Fowl	23924630	24665820	24481286	25760373	40000000
Duck	394798	390748	383123	379753	378050
Milking Cow	908712	915411	932876	954680	974122
Milking Buffaloes	1124454	1158300	1211495	1252770	1291644
Laying Hen	6962076	7153088	7124054	7290875	7478645
Laying Duck	184608	182753	179187	175300	175150

Contd...

Table 1: Livestock Population over the Last Twenty-Two Years*Unit: Number*

Category	Fiscal Year AD					
	2011/12	2012/13	2013/14	2014/15	2015/16	2016/17
Cattle	7244944	7274022	7243916	7241743	7302808	7347487
Buffaloes	5133139	5241873	5178612	5167737	5168809	5177998
Sheep	807267	809536	789216	789292	800658	801975
Goat	9512958	9786354	10177531	10251569	10986114	11165099
Pigs	1137489	1160035	1190138	1203230	1291308	1328036
Fowl	45171185	47959239	48079406	50195285	68630638	70007151
Duck	376916	375975.18	390209	390287	392255	394775
Milking Cow	998963	1025591	1024513	1025947	1026135	1029529
Milking Buffaloes	1331037	1369796	1345837	1345164	1355384	1509512
Laying Hen	7907468	8233616	8350237	8412247	12353515	12388889
Laying Duck	174978	174714	179447	179480	180927	183940

Contd...

Table 1: Livestock Population over the Last Twenty-Two Years*Unit: Number*

Category	Fiscal Year AD					
	2017/18	2018/19	2019/20	2020/21	2021/22	2022/23
Cattle	7376306	7385035	7458885	7466841	7413197	4750329
Buffaloes	5277819	5308664	5257591	5159931	5132931	3081062
Sheep	800749	798889	806079	793725	771205	501849
Goat	11647319	12283752	12811953	13442614	13990703	14541244
Pigs	1435369	1488338	1519593	1588838	1504624	1357507
Fowl	72245732	75709330	82598879	73418077	66803117	65205250
Duck	404670	416400	427226	427226	605944	1325999
Milking Cow	1039538	1078775	1166156	1209041	1223061	916579
Milking Buffaloes	1535948	1560584	1635492	1630642	1666827	851272
Laying Hen	12517558	12526979	12927842	11374011	10131642	12725053
Laying Duck	186912	190747	191701	220532	302473	661938
Yak /Nak/Chauree						5 3195
Horse/Mules/Asses						17332

Source (2001/02-2021/22):*DLS (2078/79). Livestock and Fisheries Statistics of Nepal, 2078/79 (2021/22). DLS.*

Table 2: Annual Production of Livestock Products over the Last Twenty-Two Years

Products	Fiscal Year AD					
	2001/02	2002/03	2003/04	2004/05	2005/06	2006/07
Milk Production (Mt.)	1158780	1195931	1231853	1274228	1312140	1351394
Cow Milk	352090	361555	368531	379637	385290	392791
Buffalo Milk	806690	834376	863322	894591	926850	958603
Meat (Net) Production (Mt.)	198895	203899	208412	214817	219205	227105
Buff	127495	130791	133600	138953	142040	147031
Mutton (Sheep)	2823	2792	2779	2744	2737	2747
Chevon (Goat)	38584	39664	40540	41698	42820	44933
Pork	15594	15626	15389	15724	15773	16035
Chicken	14118	14756	15881	15461	15605	16126
Duck	281	270	223	237	230	233
Egg Production ('000 Number)	538420	557361	575565	590137	600800	614848
Hen Egg	522760	541725	560033	576521	587219	600966
Duck Egg	15660	15636	15532	13616	13581	13882
Wool Production (Kg.)	609102	600689	598010	590004	586988	588248

Contd...

Table 2: Annual Production of Livestock Products over the Last Twenty-Two Years

Products	Fiscal Year AD					
	2007/08	2008/09	2009/10	2010/11	2011/12	2012/13
Milk Production (Mt.)	1388730	1445419	1495897	1556510	1622751	1680812
Cow Milk	400950	413919	429030	447185	468913	492379
Buffalo Milk	987780	1031500	1066867	1109325	1153838	1188433
Meat (Net) Production (Mt.)	233900	241690	248573	277625	287930	295167
Buff	151209	156627	162213	167868	172414	175132
Mutton (Sheep)	2725	2711	2691	2722	2720	2721
Chevon (Goat)	46570	48472	49851	52809	53956	55578
Pork	16453	16992	17066	17923	18277	18709
Chicken	16712	16662	16527	36085	40346	42810
Duck	231	226	225	218	217	217
Egg Production ('000 Number)	631253	629940	643203	704135	801370	887240
Hen Egg	617455	616312	629793	691070	788310	874194
Duck Egg	13798	13628	13410	13065	13060	13046
Wool Production (Kg.)	585255	583776	579631	586232	587017	587834

Contd...

Table 2: Annual Production of Livestock Products over the Last Twenty-Two Years

Products	Fiscal Year AD					
	2013/14	2014/15	2015/16	2016/17	2017/18	2018/19
Milk Production (Mt.)	1700073	1755725	1854247	1911239	2092403	2168434
Cow Milk	532300	587719	643806	665285	754126	795530
Buffalo Milk	1167773	1168006	1210441	1245954	1338277	1372905
Meat (Net) Production (Mt.)	298244	303401	322059	332544	346179	357082
Buff	173906	174012	175005	180080	185180	188574
Mutton (Sheep)	2656	2658	2684	2714	2754	2763
Chevon (Goat)	59053	60906	65583	67706	70802	73914
Pork	19269	20135	23509	24535	28214	28579
Chicken	43133	45458	55041	57268	60122	62899
Duck	227	232	237	241	280	352
Egg Production ('000 Number)	872918	879501	1308072	1352296	1512265	1549689
Hen Egg	859515	865947	1294166	1338312	1498024	1534680
Duck Egg	13403	13554	13906	13984	14241	15009
Wool Production (Kg.)	586848	586731	588348	594312	594639	589738

Table 2: Annual Production of Livestock Products over the Last Twenty-Two Years

Products	Fiscal Year AD			
	2019/20	2020/21	2021/22	2022/23
Milk Production (Mt.)	2301000	2479899	2566614	2613843
Cow Milk	920400	1060487	1101812	1214046
Buffalo Milk	1380600	1419412	1464802	1399797
Meat (Net) Production (Mt.)	552156	520742	512788	430085
Buff	189517	188172	194090	116503
Mutton (Sheep)	2735	2964	2880	1874
Chevon (Goat)	75023	70755	74241	77162
Pork	29493	31450	36059	32533
Chicken	255001	226959	204923	200658
Duck	387	442	596	1355
Egg Production (000 Number)	1620000	1493550	1330602	1607333
Hen Egg	1604526	1475620	1306380	1547103

Products	Fiscal Year AD			
	2019/20	2020/21	2021/22	2022/23
Duck Egg	15474	17930	24223	60229
Wool Production Kg.)	592687	584000	567412	381106

Source (2001/02-2021/22):

DLS (2078/79). Livestock and Fisheries Statistics of Nepal, 2078/79 (2021/22). DLS.

Table 3: District-wise Livestock Population, 2079/80 (2022/23)

Unit: Number

District by province	Cattle	Buffaloes	Sheep	Goat	Pigs	Fowl	Duck	Remarks
Nepal	4750329	3081062	501849	14541244	1357507	65205250	1325999	
Koshi province	1338729	376833	39071	3285175	780711	8941678	314362	
Bhojpur	80386	24069	3870	160120	46516	325881	3228	
Dhankuta	59874	11940	1652	217482	53703	569874	6447	
Ilam	119118	18606	1999	288888	59670	525450	4327	
Jhapa	221229	33547	3167	471388	112050	1436360	52336	
Khotang	76718	41345	5027	210796	44501	374398	2427	
Morang	239032	41570	776	508416	158169	1855006	115319	
Okhaldhunga	48866	38498	5390	160547	15316	286113	13151	
Panchthar	63903	19439	2005	160360	62249	377154	2543	
Sankhuwasabha	63090	14339	7233	160157	32478	434371	3965	
Solukhumbu	38086	18587	1980	61907	14044	217367	504	
Sunsari	169634	49298	965	325305	70699	1310523	91656	
Taplejung	38363	13520	2867	106148	31487	246833	2377	
Terhathum	31900	12508	1680	109470	26200	229847	1929	
Udayapur	88531	39568	461	344189	53630	752501	14151	
Madhesh province	411546	564438	9318	1451585	22383	6210088	279770	
Bara	33134	52619	1215	145753	3898	579423	25886	
Dhanusha	57062	80320	1392	169321	2195	983612	17696	
Mahottari	39458	72959	307	173810	1261	659939	38193	
Parsa	16523	28935	0	117706	2160	982113	39294	
Rautahat	20560	69480	1114	214860	3592	355768	46237	
Saptari	139819	57706	1459	213214	4126	1137773	33625	
Sarlahi	41176	110473	1542	247356	3502	535197	36418	
Siraha	63812	91948	2289	169564	1650	976262	42420	

District by province	Cattle	Buffaloes	Sheep	Goat	Pigs	Fowl	Duck	Remarks
Bagmati province	609639	468902	24443	2935773	125583	29918766	176281	
Bhaktapur	14515	861	16	24396	2994	1579830	1653	
Chitwan	80704	54057	2824	272117	24258	14955700	109576	
Dhading	57376	65435	7592	410980	9696	2281103	2919	
Dolakha	40686	26879	4582	235819	3381	540425	597	
Kathmandu	35670	6576	594	80090	11710	2229809	20107	
Kabhrepalanchok	58359	62416	327	324594	8403	2291589	5559	
Lalitpur	17494	22075		59071	9458	1361804	13120	
Makwanpur	76734	29762	130	378369	10095	1973254	6184	
Nuwakot	29387	64086	2332	235574	2490	705846	1608	
Ramechhap	52312	36875	1196	256069	14299	512932	862	
Rasuwa	11294	7689	2387	34405	1712	93785	360	
Sindhuli	93239	47309	1693	318415	21867	903701	11815	
Sindhupalchok	41869	44882	769	305875	5221	488988	1920	
Gandaki province	255191	480264	62521	1626961	133644	6481890	102943	
Baglung	30053	74644	7114	143617	7262	474900	6914	
Gorkha	46912	52970	17357	322593	14467	928127	12236	
Kaski	26713	68480	2605	106350	11046	2883276	5405	
Lamjung	17473	38231	20388	155564	4714	297708	877	
Manang	1549		1465	3850	82	1900	0	
Mustang	6653	165	668	48898	249	3674	0	
Myagdi	19108	27475	7140	51767	2573	112350	3391	
Nawalparasi east	39952	44623	2834	201747	39748	826960	58880	
Parbat	9137	38214	659	64618	1131	372262	4576	
Syangja	16360	79736	915	202430	10622	477761	2607	
Tanahun	41280	55726	1377	325527	41751	102972	8057	
Lumbini province	539624	696443	82562	2407153	192901	8488460	376428	
Arghakhanchi	27078	54605	714	194191	1798	504147	499	
Banke	41307	56613	4851	151209	13925	918787	31990	
Bardiya	49217	59970	13833	224382	41632	489458	38208	
Dang	91968	70481	20388	352804	61831	2495932	63846	
Gulmi	19988	88481	2037	219480	6133	233517	2742	
Kapilbastu	27615	77310	2571	155125	7558	725925	42571	
Nawalparasi west	12602	34859	55	118166	4393	449013	90840	

District by province	Cattle	Buffaloes	Sheep	Goat	Pigs	Fowl	Duck	Remarks
Palpa	39224	60544	549	250177	29484	548693	2791	
Pyuthan	60740	55665	3959	231501	3812	236127	909	
Rolpa	104603	32237	22725	212520	7355	480545	2785	
Rukum east	30705	4923	7451	34247	2425	124124	648	
Rupandehi	34577	100754	3429	263351	12556	1282192	98599	
Karnali province	678061	175023	203850	1390614	15893	2136940	25828	
Dailekh	106166	41210	3406	210206	1253	278990	799	
Dolpa	23912	291	20353	41155	263	3922	1220	
Humla	40501	2408	17694	58206	195	24032	49	
Jajarkot	97078	25817	15982	159875	500	171639	599	
Jumla	65076	1877	53895	40746	469	28222	4639	
Kalikot	64797	19083	13966	71056	405	118566	839	
Mugu	38867	3857	29508	50970	352	15442	718	
Rukum west	40432	32064	16236	151663	574	289683	3146	
Salyan	102984	18643	24936	300224	3754	481277	8532	
Surkhet	98247	29774	7874	306515	8128	725167	5285	
Sudurpaschim province	917540	319158	80084	1443982	86392	3027428	50388	
Achham	86387	36507	2075	156539	434	87201	1124	
Baitadi	118383	50483	895	158875	597	29496	11	
Bajhang	149122	22317	26452	90153	783	49539	425	
Bajura	83588	16849	29185	84669	835	54691	905	
Dadeldhura	63565	21855	215	123671	832	66284	328	
Darchula	97631	17235	9042	83776	507	37348	61	
Doti	108422	12453	245	131579	306	127770	270	
Kailali	121613	68267	10374	381299	64060	1541163	41757	
Kanchanpur	88828	73192	1602	233421	18039	1033936	5507	

Table 4: District-wise Milking Animal Population and Milk Production, 2079/80 (2022/23)

District by province	Milking cows (No.)	Milking buffaloes (No.)	Cow milk (Mt.)	Buffaloes milk (Mt.)	Total milk produced (Mt.)	Remarks
Nepal	916579	851272	1214046	1399797	2613843	
Koshi province	318536	82996	391854	118175	510030	
Bhojpur	11174	4914	8663	5171	13835	
Dhankuta	8004	2632	10615	2948	13563	

District by province	Milking cows (No.)	Milking buffaloes (No.)	Cow milk (Mt.)	Buffaloes milk (Mt.)	Total milk produced (Mt.)	Remarks
Ilam	31670	3261	34304	4913	39217	
Jhapa	55183	3674	80338	7912	88250	
Khotang	10736	9883	8037	9757	17794	
Morang	80381	7629	112372	16407	128779	
Okhaldhunga	6296	10903	5062	10896	15958	
Panchthar	11185	4433	10618	4478	15096	
Sankhuwasabha	12724	3391	9629	3183	12812	
Solukhumbu	6676	4256	4608	3988	8596	
Sunsari	52537	12534	79737	26851	106587	
Taplejung	5301	3102	4181	3011	7192	
Terhathum	6426	3305	6119	4984	11102	
Udayapur	20243	9078	17572	13678	31250	
Madhesh province	90595	159892	178984	296886	475870	
Bara	13059	16941	28006	32145	60151	
Dhanusha	12545	23243	25401	43254	68655	
Mahottari	9151	21787	19805	40110	59915	
Parsa	6166	8635	13343	16180	29524	
Rautahat	7057	19480	15135	36173	51308	
Saptari	20496	17415	36308	32143	68451	
Sarlahi	10563	29766	22655	55382	78037	
Siraha	11558	22626	18331	41499	59830	
Bagmati province	127649	123048	218183	218640	436823	
Bhaktapur	3843	320	8420	679	9099	
Chitwan	18044	16174	45512	36799	82311	
Dhading	10770	15155	20967	22840	43807	
Dolakha	6234	6725	9389	9774	19163	
Kathmandu	10090	2622	20650	5957	26608	
Kabhrepalanchok	13547	19136	31402	41427	72829	
Lalitpur	4163	9843	6209	21908	28117	
Makwanpur	17777	5510	22516	8695	31211	
Nuwakot	6036	17021	11259	26951	38210	
Ramechhap	8986	8215	10349	11882	22231	
Rasuwa	2013	1640	1277	2459	3736	

District by province	Milking cows (No.)	Milking buffaloes (No.)	Cow milk (Mt.)	Buffaloes milk (Mt.)	Total milk produced (Mt.)	Remarks
Sindhuli	18376	8738	22299	12612	34911	
Sindhupalchok	7770	11948	7933	16657	24590	
Gandaki province	50375	149348	71957	235485	307442	
Baglung	5635	25742	3369	35612	38981	
Gorkha	9028	11884	9124	16733	25857	
Kaski	6840	24491	13326	47916	61242	
Lamjung	3074	10715	3621	15021	18642	
Manang	261		171		171	
Mustang	1211	82	625	114	739	
Myagdi	3311	8060	3194	11313	14507	
Nawalparasi east	9298	11054	21627	20672	42299	
Parbat	1491	14760	2574	21045	23618	
Syangja	2851	26872	3843	37473	41316	
Tanahun	7374	15688	10482	29586	40068	
Lumbini province	102875	189052	178621	316580	495201	
Arghakhanchi	4560	16583	4278	24270	28548	
Banke	12296	13886	28369	25931	54299	
Bardiya	11103	10340	24410	15278	39688	
Dang	12047	16452	18692	24367	43058	
Gulmi	2824	26449	4372	38564	42936	
Kapilbastu	8561	22548	21195	41531	62727	
Nawalparasi west	5124	10964	12941	21949	34890	
Palpa	6151	15391	11240	23127	34367	
Pyuthan	9440	15507	9782	22716	32498	
Rolpa	14102	8411	10793	12201	22994	
Rukum east	4162	1357	2786	1962	4748	
Rupandehi	12506	31165	29764	64683	94448	
Karnali province	85963	53448	51264	67515	118779	
Dailekh	12903	13287	7782	16676	24459	
Dolpa	3028	69	1645	82	1727	
Humla	5725	599	2883	712	3595	
Jajarkot	12009	6930	6383	8727	15110	
Jumla	8059	644	4158	766	4924	

District by province	Milking cows (No.)	Milking buffaloes (No.)	Cow milk (Mt.)	Buffaloes milk (Mt.)	Total milk produced (Mt.)	Remarks
Kalikot	9022	6173	4317	7755	12072	
Mugu	4991	876	2513	1041	3554	
Rukum west	4901	9029	2830	11337	14166	
Salyan	13138	6260	11275	7952	19227	
Surkhet	12187	9581	7478	12467	19945	
Sudurpaschim province	140585	93488	123183	146516	269699	
Achham	10623	13373	5287	19063	24350	
Baitadi	19173	17854	12596	25473	38069	
Bajhang	21590	7467	10591	10658	21249	
Bajura	12283	5435	7578	7743	15321	
Dadeldhura	9767	5927	9794	8472	18265	
Darchula	16704	4828	10044	6521	16564	
Doti	17080	4281	11583	6110	17693	
Kailali	18027	15495	31539	28242	59781	
Kanchanpur	15338	18830	24172	34233	58405	

Table 5: District-wise Meat Production, 2079/80 (2022/23)

Unit: Mt.

District by province	Buff	Mutton	Chevon	Pork	Chicken	Duck	Total meat	Remarks
Nepal	116503	1874	77162	32533	200658	1355	430085	
Koshi province	16270	146	18543	18710	21844	321	75833	
Bhojpur	1051	14	906	1115	534	3	3623	
Dhankuta	517	6	1241	1287	1009	7	4066	
Ilam	808	7	1635	1430	936	4	4821	
Jhapa	1466	12	2681	2685	4387	53	11284	
Khotang	1774	19	1206	1066	587	2	4654	
Morang	1806	3	2839	3791	4599	118	13156	
Okhaldhunga	1665	20	923	367	517	13	3505	
Panchthar	839	7	909	1492	980	3	4230	
Sankhuwasabha	616	27	892	778	809	4	3126	
Solukhumbu	801	7	351	337	330	1	1828	

District by province	Buff	Mutton	Chevon	Pork	Chicken	Duck	Total meat	Remarks
Sunsari	2100	4	1809	1694	4558	94	10258	
Taplejung	583	11	600	755	443	2	2394	
Terhathum	538	6	617	628	354	2	2144	
Udayapur	1706	2	1935	1285	1800	14	6743	
Madhesh province	26224	35	8523	536	23493	286	59096	
Bara	2461	5	869	93	2296	26	5750	
Dhanusha	3710	5	994	53	3626	18	8405	
Mahottari	3355	1	1020	30	3146	39	7590	
Parsa	1331		696	52	3482	40	5600	
Rautahat	3224	4	1246	86	1115	47	5722	
Saptari	2649	5	1261	99	4411	34	8459	
Sarlahi	5154	6	1440	84	1705	37	8426	
Siraha	4340	9	998	40	3712	43	9142	
Bagmati province	23235	91	16279	3010	92693	180	135488	
Bhaktapur	41	0	134	72	3967	2	4217	
Chitwan	2654	11	1621	581	46839	112	51819	
Dhading	3286	28	2264	232	8467	3	14281	
Dolakha	1339	17	1292	81	1722	1	4451	
Kathmandu	318	2	464	281	6152	21	7237	
Kabhrepalanchok	3054	1	1757	201	8605	6	13625	
Lalitpur	1065		334	227	4448	13	6087	
Makwanpur	1487		2128	242	4631	6	8494	
Nuwakot	3168	9	1317	60	2600	2	7156	
Ramechhap	1844	4	1399	343	1101	1	4692	
Rasuwa	384	9	194	41	265		893	
Sindhuli	2364	6	1732	524	2354	12	6991	
Sindhupalchok	2229	3	1642	125	1543	2	5544	
Gandaki province	14066	233	9367	3203	23622	105	50596	
Baglung	2199	27	822	174	1207	7	4435	
Gorkha	1569	65	1869	347	3248	13	7111	
Kaski	1995	10	622	265	12492	6	15389	
Lamjung	1118	76	896	113	907	1	3111	

District by province	Buff	Mutton	Chevon	Pork	Chicken	Duck	Total meat	Remarks
Manang		5	23	2	7		38	
Mustang	5	2	283	6	6		303	
Myagdi	798	27	308	62	310	3	1508	
Nawalparasi east	1306	11	1129	953	2327	60	5785	
Parbat	1117	2	369	27	1245	5	2765	
Syangja	2323	3	1143	255	1547	3	5273	
Tanahun	1636	5	1902	1001	326	8	4878	
Lumbini province	21101	308	10517	4623	23392	385	60325	
Arghakhanchi	1637	3	819	43	1638	1	4140	
Banke	1713	18	669	334	2785	33	5551	
Bardiya	1854	52	986	998	1479	39	5408	
Dang	2156	76	1542	1482	7503	65	12824	
Gulmi	2659	8	931	147	537	3	4284	
Kapilbastu	2343	10	661	181	2909	44	6148	
Nawalparasi west	1045	0	525	105	412	93	2180	
Palpa	1842	2	1084	707	1298	3	4936	
Pyuthan	1682	15	1031	91	570	1	3391	
Rolpa	978	85	970	176	741	3	2954	
Rukum east	150	28	153	58	231	1	620	
Rupandehi	3042	13	1146	301	3288	101	7891	
Karnali province	5186	761	6873	381	4958	26	18185	
Dailekh	1212	13	1038	30	737	1	3030	
Dolpa	9	76	203	6	9	1	304	
Humla	72	66	283	5	46		471	
Jajarkot	764	60	784	12	298	1	1919	
Jumla	56	201	204	11	44	5	521	
Kalikot	572	52	361	10	389	1	1386	
Mugu	117	110	251	8	26	1	513	
Rukum west	953	61	740	14	529	3	2299	
Salyan	556	93	1496	90	823	9	3066	
Surkhet	876	29	1513	195	2058	5	4676	
Sudurpaschim province	10422	299	7062	2070	10657	52	30561	

District by province	Buff	Mutton	Chevon	Pork	Chicken	Duck	Total meat	Remarks
Achham	1138	8	771	10	245	1	2173	
Baitadi	1568	3	791	14	114	0	2490	
Bajhang	696	99	444	19	189	0	1447	
Bajura	526	109	421	20	134	1	1211	
Dadeldhura	686	1	601	20	257		1566	
Darchula	539	34	407	12	74		1066	
Doti	389	1	645	7	507		1550	
Kailali	2355	39	1859	1535	5056	43	10886	
Kanchanpur	2524	6	1123	432	4080	6	8171	

Table 6: District-wise Egg Production by 2079/80 (2022/23)

District by province	Laying hen (No.)	Laying duck (No.)	Hen egg ('000)	Duck egg ('000)	Total egg ('000)	Remarks
Nepal	12725053	661938	1547103	60229	1607333	
Koshi province	1245860	165563	100156	15065	115221	
Bhojpur	38232	1616	2562	147	2709	
Dhankuta	83292	3232	5141	294	5435	
Ilam	64887	2169	3950	197	4148	
Jhapa	210986	27231	22618	2478	25096	
Khotang	46435	1193	3165	109	3273	
Morang	274061	61731	24901	5617	30518	
Okhaldhunga	40261	6461	2626	588	3214	
Panchthar	33880	1250	2175	114	2289	
Sankhuwasabha	51470	1948	3294	177	3471	
Solukhumbu	43157	243	3152	22	3174	
Sunsari	213841	49027	16275	4461	20736	
Taplejung	34446	1168	2251	106	2358	
Terhathum	39537	946	2681	86	2767	
Udayapur	71378	7349	5365	669	6033	
Madhesh province	648730	142263	70124	12944	83069	
Bara	75733	13236	7858	1204	9062	
Dhanusha	113427	9048	13353	823	14176	
Mahottari	28000	19528	2075	1777	3852	
Parsa	121162	19306	13955	1757	15712	

District by province	Laying hen (No.)	Laying duck (No.)	Hen egg ('000)	Duck egg ('000)	Total egg ('000)	Remarks
Rautahat	51249	23641	5705	2151	7856	
Saptari	88457	17193	10585	1564	12149	
Sarlahi	80090	18621	10653	1694	12347	
Siraha	90611	21690	5941	1974	7915	
Bagmati province	7685921	88589	1067103	8061	1075164	
Bhaktapur	261886	845	30061	77	30138	
Chitwan	4771403	54932	699028	4998	704026	
Dhading	238925	1463	27362	133	27495	
Dolakha	120121	299	14188	27	14215	
Kathmandu	620454	10281	82088	935	83024	
Kabhrepalanchok	330728	2787	41400	254	41653	
Lalitpur	221686	6577	22235	598	22833	
Makwanpur	799438	3100	117957	282	118239	
Nuwakot	54916	806	6384	73	6458	
Ramechhap	91949	432	8594	39	8633	
Rasuwa	28051	180	3835	16	3851	
Sindhuli	96320	5923	9254	539	9793	
Sindhupalchok	50043	962	4718	88	4806	
Gandaki province	915670	48292	87088	4394	91482	
Baglung	81952	3328	7553	303	7856	
Gorkha	110300	5889	10359	536	10895	
Kaski	294045	2601	28469	237	28706	
Lamjung	70161	422	7337	38	7375	
Manang	476		53		53	
Mustang	1214		83		83	
Myagdi	22040	1632	2352	149	2501	
Nawalparasi east	203026	28340	19842	2579	22421	
Parbat	48874	2203	4332	200	4533	
Syangja	69171		5404		5404	
Tanahun	14411	3878	1303	353	1655	
Lumbini province	1606859	180101	176621	16387	193008	
Argkhanchi	50199	235	3257	21	3278	
Banke	140058	15397	14798	1401	16199	
Bardiya	62216	17392	5358	1582	6941	

District by province	Laying hen (No.)	Laying duck (No.)	Hen egg ('000)	Duck egg ('000)	Total egg ('000)	Remarks
Dang	383276	30730	40513	2796	43309	
Gulmi	39365	1320	3674	120	3794	
Kapilbastu	65219	20490	5699	1864	7563	
Nawalparasi west	191166	43722	26406	3978	30384	
Palpa	55185	1316	3801	120	3921	
Pyuthan	24264	419	1895	38	1933	
Rolpa	58665	1313	4168	119	4288	
Rukum east	17680	312	1513	28	1542	
Rupandehi	519568	47457	65539	4318	69857	
Karnali province	332812	12413	27019	1129	28149	
Dailekh	38233	385	2802	35	2837	
Dolpa	788	587	47	53	101	
Humla	5203	23	317	2	319	
Jajarkot	20243	288	1457	26	1483	
Jumla	6316	2233	394	203	598	
Kalikot	22208	404	2093	37	2130	
Mugu	4009	328	268	30	298	
Rukum west	43824	1514	3500	138	3638	
Salyan	74908	4107	5521	374	5895	
Surkhet	117079	2544	10620	231	10852	
Sudurpaschim province	289202	24716	18991	2249	21240	
Achham	9790	530	602	48	650	
Baitadi	4468	5	360	0	360	
Bajhang	6282	204	521	19	540	
Bajura	11712	435	952	40	992	
Dadeldhura	6847	158	634	14	649	
Darchula	9117	29	797	3	800	
Doti	5484	133	333	12	345	
Kailali	145934	20516	9270	1867	11136	
Kanchanpur	89567	2706	5522	246	5769	

Table 7: District-wise Wool Production, 2079/80 (2022/23)

District by province	Sheep (No.)	Wool (Kg.)	Remarks
Nepal	501849	381106	
Koshi province	39071	28309	
Bhojpur	3870	2902	
Dhankuta	1652	1157	
Ilam	1999	1399	
Jhapa	3167	1267	
Khotang	5027	3971	
Morang	776	347	
Okhaldhunga	5390	4258	
Panchthar	2005	1584	
Sankhuwasabha	7233	5714	
Solukhumbu	1980	1564	
Sunsari	965	409	
Taplejung	2867	2150	
Terhthum	1680	1265	
Udayapur	461	323	
Madhesh province	9318	3925	
Bara	1215	508	
Dhanusha	1392	560	
Mahottari	307	128	
Parsa			
Rautahat	1114	444	
Saptari	1459	602	
Sarlahi	1542	668	
Sirah	2289	1014	
Bagmati province	24443	18043	
Bhaktapur	16	9	
Chitwan	2824	1571	
Dhading	7592	6073	
Dolakha	4582	3437	
Kathmandu	594	334	
Kavreplanchok	327	196	
Lalitpur			
Makawanpur	130	91	
Nuwakot	2332	2087	

District by province	Sheep (No.)	Wool (Kg.)	Remarks
Ramechap	1196	848	
Rasuwa	2387	1719	
Sindhuli	1693	1063	
Sindhupalchok	769	615	
Gandaki province	62521	49736	
Baglung	7114	5620	
Gorkha	17357	13712	
Kaski	2605	1693	
Lamjung	20388	16310	
Manag	1465	1369	
Mustang	668	634	
Myagdi	7140	6783	
Nawalparasi east	2834	1372	
Parbat	659	523	
Syangja	915	686	
Tanahu	1377	1033	
Lumbini province	82562	49291	
Arghakhanchi	714	549	
Banke	4851	2359	
Bardiya	13833	6319	
Dang	20388	10194	
Gulmi	2037	1609	
Kapilbastu	2571	1172	
Nawalparasi west	55	22	
Palpa	549	360	
Pyuthan	3959	2647	
Rolpa	22725	17219	
Rukum east	7451	5216	
Rupandehi	3429	1624	
Karnali province	203850	168896	
Dailekha	3406	2425	
Dolpa	20353	17069	
Humla	17694	14744	
Jajarkot	15982	12674	
Jumla	53895	48547	
Kalikot	13966	11823	

District by province	Sheep (No.)	Wool (Kg.)	Remarks
Mugu	29508	26084	
Rukum west	16236	12051	
Salyan	24936	17634	
Surkhet	7874	5845	
Sudurpaschim province	80084	62906	
Achham	2075	1618	
Baitadi	895	696	
Bajhang	26452	22732	
Bajura	29185	24735	
Dadeldhura	215	166	
Darchula	9042	7686	
Doti	245	167	
Kailali	10374	4411	
Kanchanpur	1602	695	

Table 8: District-wise Yak/Nak/Chauri Population, 2079/80 (2022/23)

District by province	Yak/nak/chaury (No.)	Remarks
Nepal	53195	
Koshi province	12709	
Bhojpur	597	
Ilam	517	
Khotang	189	
Okhaldhunga	757	
Panchthar	954	
Sankhuwasabha	2605	
Solukhumbu	3762	
Taplejung	3329	
Bagmati province	10756	
Dhading	513	
Dolakha	2562	
Nuwakot	605	
Ramechhap	974	
Rasuwa	2941	
Sindhupalchok	3161	
Gandaki province	10722	
Gorkha	5817	

District by province	Yak/nak/chaury (No.)	Remarks
Kaski	671	
Lamjung	275	
Manag	2837	
Mustang	361	
Myagdi	760	
Lumbini province	15	
Rukum east	15	
Karnali province	17162	
Dolpa	10550	
Humla	3905	
Jajarkot	569	
Jumla	582	
Kalikot	900	
Mugu	656	
Sudurpaschim province	1831	
Bajhang	450	
Bajura	298	
Darchula	1083	

Table 9: District-wise Rabbit Population, 2079/80 (2022/23)

District by province	Rabbit (No.)	Remarks
Nepal	43192	
Koshi province	5439	
Bhojpur	105	
Dhankuta	149	
Ilam	155	
Jhapa	670	
Khotang	350	
Morang		
Okhaldhunga	405	
Panchthar	75	
Sankhuwasabha		
Solukhumbu	320	
Sunsari	1504	
Taplejung	290	

District by province	Rabbit (No.)	Remarks
Terhathum	349	
Udayapur	1067	
Madhesh province		
Bara		
Dhanusha		
Mahottari		
Parsa		
Rautahat		
Saptari		
Sarlahi		
Siraha		
Bagmati province	6912	
Bhaktapur	324	
Chitwan		
Dhading	855	
Dolakha		
Kathmandu	760	
Kabhrepalanchok	3408	
Lalitpur	640	
Makwanpur	925	
Nuwakot		
Ramechhap		
Rasuwa		
Sindhuli		
Sindhupalchok		
Gandaki province	5192	
Baglung	370	
Gorkha	1105	
Kaski	2876	
Lamjung		
Manang		
Mustang		
Myagdi	190	
Nawalparasi east		
Parbat	651	

District by province	Rabbit (No.)	Remarks
Syangja		
Tanahun		
Lumbini province	9987	
Arghakhanchi	124	
Banke		
Bardiya		
Dang	6203	
Gulmi	703	
Kapilbastu	675	
Nawalparasi west	420	
Palpa	1023	
Pyuthan		
Rolpa	125	
Rukum east	95	
Rupandehi	619	
Karnali province	8803	
Dailekh	1205	
Dolpa	1907	
Humla		
Jajarkot	1190	
Jumla		
Kalikot	2402	
Mugu		
Rukum west	2099	
Salyan		
Surkhet		
Sudurpaschim province	6859	
Achham	1299	
Baitadi	309	
Bajhang	459	
Bajura	379	
Dadeldhura	760	
Darchula	490	
Doti	503	
Kailali	1051	
Kanchanpur	1609	

Table 10: District-wise Horses/Asses Population, 2079/80 (2022/23)*Unit: Number*

District by province	Horses/Asses/Donkey (No.)	Remarks
Nepal	17,332	
Koshi province	3,765	
Bhojpur	432	
Ilam	737	
Jhapa	61	
Khotang	87	
Morang	74	
Panchthar	678	
Sankhuwasabha	369	
Solukhumbu	717	
Sunsari	39	
Taplejung	226	
Terhthum	254	
Udayapur	90	
Madhesh province	485	
Bara	72	
Mahottari	107	
Rautahat	89	
Saptari	25	
Sarlahi	42	
Siraha	150	
Bagmati province	277	
Dhading	72	
Dolakha	52	
Kavreplanchok	22	
Rasuwa	59	
Sindhupalchok	71	
Gandaki province	1,954	
Baglung	412	
Gorkha	232	
Manag	283	
Mustang	921	

District by province	Horses/Asses/Donkey (No.)	Remarks
Myagdi	106	
Lumbini province	1,818	
Dang	1,028	
Gulmi	38	
Rolpa	66	
Rukum east	686	
Karnali province	7,687	
Dolpa	1,026	
Humla	1,817	
Jajarkot	314	
Jumla	1,958	
Kalikot	585	
Mugu	1,762	
Rukum west	166	
Surkhet	59	
Sudurpaschim province	1,346	
Achham	221	
Baitadi	87	
Bajhang	114	
Bajura	338	
Dadeldhura	254	
Darchula	331	

FISHERY

Table 11: Sources of Fish Production (FY 2073/74 to 2079/80)

Particulars	Fiscal Year 2073/74 BS				Fiscal Year 2074/75 BS			
	Pond (No.)	Total Area (Ha.)	Fish Production (Mt.)	Yield Kg./Ha.	Pond (No.)	Total Area (Ha.)	Fish Production (Mt.)	Yield Kg./Ha.
A. Fish Production from Aquaculture Practices			62,897				65,544	
A1 Pond Fish Culture	44,725	11,396	55,842	4,900	45327	11889.09	58433	4915
Mountain	154	11	28	2,545	156	11.1	28	2536
Hill	4,203	435	1,205	2,770	4237	442.95	1239	2798
Terai	40,368	10,950	54,609	4,987	40934	11435.04	57165	4999
A2 Other Areas (Wetland)		3,500	6,300	1,800		3,500	6390	1826
A3 Paddy Cum Fish Culture (Ha.)		75	23	300		75	15	200
A4 Cage Fish Culture (m ³)		71,000	299			71,800	302.28	
A5 Enclosure Fish Culture (Ha.)		75	98	1,300		50	65	1,300
A6 Trout Fish Culture in Raceway (Ha.)		3.15	315	100,000		3.2	320	100,000
A7 Fish Production in the Public Sector (Mt.)			21				18.8	
B. Fish Production from Capture Fisheries			21,000				21,000	
B1 Rivers		395,000	7,110	18		395,000	7,110	18
B2 Lakes		5,000	1,000	200		5,000	1,000	200
B3 Reservoirs		1,500	525	350		1,500	525	350
B4 Marginal /Swamps/ Wetland etc.		9,000	5,200	578		9,000	5,200	578
B5 Low Land Irrigated Paddy Fields		398,000	7,165	18		398,000	7,165	18
Total Fish Production (Mt.)			83,898				86,544	
C. Fish Seed Production / Distribution* (No. in '000)				282,585			2,95,130	

Particulars	Fiscal Year 2073/74 BS				Fiscal Year 2074/75 BS			
	Pond (No.)	Total Area (Ha.)	Fish Production (Mt.)	Yield Kg./Ha.	Pond (No.)	Total Area (Ha.)	Fish Production (Mt.)	Yield Kg./Ha.
C1 Public Sector				63,666			74,505	
a. Hatchling **				220,438			257,427	
b. Fry				17,163			18,037	
c. Fingerling ***				13,332			16,650	
C2 Private Sector				218,919			220,625	
a. Fry				218,919			220,625	
* Seed production is calculated as the total number of fry production ** Hatchling distributed by the public sector is used for fry production by the private sector considering a 30% contribution by the public and 70% contribution by the private sector in total fry production *** Fingerlings are converted to fry by just doubling their total number								

Contd...

Table 11: Sources of Fish Production (FY 2073/74 to 2079/80)

Particulars	Fiscal Year 2075/76 BS				Fiscal Year 2076/77 BS			
	Pond (No.)	Total Area (Ha.)	Fish Production (Mt.)	Yield Kg./Ha.	Pond (No.)	Total Area (Ha.)	Fish Production (Mt.)	Yield Kg./Ha.
A. Fish Production from Aquaculture Practices			70832				76271	
A1 Pond Fish Culture	45936	12749	62725	4919.9	48369	13476	66906	4964
Mountain	156	11.1	28.15	2536.0	156	11.1	28	2522.5
Hill	4278	445.95	1272	2852.3	4278	445.95	1272	2852.3

Particulars	Fiscal Year 2075/76 BS				Fiscal Year 2076/77 BS			
	Pond (No.)	Total Area (Ha.)	Fish Production (Mt.)	Yield Kg./Ha.	Pond (No.)	Total Area (Ha.)	Fish Production (Mt.)	Yield Kg./Ha.
Terai	41502	12291.95	41425	3370.0	43935	13018.95	65606	5039.2
A2 Other Areas (Wetland)		3500	7289	2082.5		3550	8434	
A3 Paddy Cum Fish Culture (Ha.)		72	15	208.3		50	11	
A4 Cage Fish Culture (m ³)		71800	305			73206	307	
A5 Enclosure Fish Culture (Ha.)		50	60	1200		42.3	55	
A6 Trout Fish Culture in Raceway (Ha.)		3.2	420	131250		3.9	551	
A7 Fish Production in Public Sector (Mt.)			18.8				7	
B. Fish Production from Capture Fisheries			21000				21000	
B1 Rivers		395000	7110	18		395000	7110	18
B2 Lakes		5000	1000	200		5000	1000	200
B3 Reservoirs		1500	525	350		1500	525	350
B4 Marginal/Swamps/ Wetland etc.		9000	5200	578		9000	5200	578
B5 Low Land Irrigated Paddy Fields		398000	7165	18.00251		398000	7165	18.00251
Total Fish Production (Mt.)			91832				97271	
C. Fish Seed Production/ Distribution* (No. in '000)			339224				438628	
C1 Public Sector			74505				100572	
a. Hatchling**			257427				222475	
b. Fry			18037				14825	
c. Fingerling***			15360				15064	
C2 Private Sector			273100				338056	

Particulars	Fiscal Year 2075/76 BS				Fiscal Year 2076/77 BS			
	Pond (No.)	Total Area (Ha.)	Fish Production (Mt.)	Yield Kg./Ha.	Pond (No.)	Total Area (Ha.)	Fish Production (Mt.)	Yield Kg./Ha.
a. Fry			273100				338056	
* Seed production is calculated as the total number of fry production								
** Hatchling distributed by the public sector is used for fry production by the private sector considering a 30% contribution by the public and 70% contribution by the private sector in total fry production								
*** Fingerlings are converted to fry by just doubling their total number								

Contd...

Table 11: Sources of Fish Production (FY 2073/74 to 2079/80)

Particulars	Fiscal Year 2077/78 BS				Fiscal Year 2078/79			
	Pond (No.)	Total Area (Ha.)	Fish Production (Mt.)	Yield Kg./Ha.	Pond (No.)	Total Area (Ha.)	Fish Production (Mt.)	Yield Kg./Ha.
A. Fish Production from Aquaculture Practices			83623.0				87385	
A1 Pond Fish culture	50122	13854.0	73693.0	5319.3	49862	14137.0	77320.0	5469
Mountain	462	20.2	29.0	1434.5	670	49.0	134.0	2736.9
Hill	4491	430.3	1178.2	2738.3	8874	1452.9	6386.8	4396.0
Terai	45169	13403.8	72485.3	5407.8	40318	12635.2	70799.0	5603.3
A2 Other area (ghols)		3550.0	8875.0			3550.0	8930.0	
A3 Paddy cum fish culture (Ha.)		52.0	18.0			49.0	17.0	
A4 Cage fish culture (m ³)		73706.0	309.0			73803.0	313.0	
A5 Enclosure fish culture (Ha.)		42.3	55.0			40.0	53.0	
A6 Trout Fish Culture in Raceway (Ha.)		4.7	668.0			5.3	747.0	

Particulars	Fiscal Year 2077/78 BS				Fiscal Year 2078/79			
	Pond (No.)	Total Area (Ha.)	Fish Production (Mt.)	Yield Kg./Ha.	Pond (No.)	Total Area (Ha.)	Fish Production (Mt.)	Yield Kg./Ha.
A7 Fish Production in Public Sector (Mt.)			5.0				5.0	
B. Fish Production from Capture Fisheries			21000.0				21000.0	
B1 Rivers		395000	7110.0	18.0		395000	7110.0	18.0
B2 Lakes		5000	1000.0	200.0		5000	1000.0	200.0
B3 Reservoirs		1500	525.0	350.0		1500	525.0	350.0
B4 Marginal/Swamps/ghols etc.		9000	5200.0	578.0		9000	5200.0	578.0
B5 Low Land Irrigated Paddy Fields		398000	7165.0	18.0		398000	7165.0	18.0
Total Fish Production (Mt.)			104623.0				108385.0	
C. Fish Seed Production/Distribution* (No. in '000)			516466.0				538742.0	
C1 Public Sector			115172.0				127974.0	
a. Hatchling**			270200.0				332600.0	
b. Fry			14802.0				15172.0	
c. Fingerling***			136054.0				14826.0	
C2 Private Sector			401294.0				410768.0	
a. Fry			401294.0				417527.0	
* Seed production is calculated as the total number of fry production								
** Hatchling distributed by the public sector is used for fry production by the private sector considering a 23.76 % contribution by the public and 76.24% contribution by the private sector in total fry production for FY 2078/79								
*** Fingerlings are converted to fry by just doubling their total number								

Table 11: Sources of Fish Production (FY 2073/74 to 2079/80)

Particulars	Fiscal year Fiscal 2079/80				Remarks
	Pond (No.)	Total Area(Ha.)	Fish Production (Mt.)	Yield (Mt./Ha.)	
A. Fish Production from Aquaculture Practices			92736		
A1 Pond Fish culture(Carps)	50326	14745	82161	5.572	
Mountain	670	48.96	82	1.67	
Hill	8874	1452.85	6787	4.67	
Terai	40782	13243.3	75292	5.69	
A2 Other area (ghols)		3670	9125		
A3 Paddycum fish culture (Ha.)		49	17		
A4 Cage fish culture (m ³)		71205	370		
A5 Enclosure fish culture (Ha.)		35	48		
A6 Trout Fish Culture in Raceway (Ha.)		6.8	1007		
A7 Fish Production in Public Sector (Mt)			8		
B. Fish Production from Capture Fisheries			21000		
B1 Rivers		395000	7110	0.018	
B2 Lakes		5000	1000	0.20	
B3 Reservoirs		1500	525	0.35	
B4 Marginal/Swamps/ghols etc.		9000	5200	0.578	
B5 Low Land Irrigated Paddy Fields		398000	7165	0.018	
Total Fish Production (Mt.)			113,736		
C. Fish Seed Production/Distribution			569,070		
C1 Public Sector(000)			131,239		

Particulars	Fiscal year Fiscal 2079/80				Remarks
	Pond (No.)	Total Area(Ha.)	Fish Production (Mt.)	Yield (Mt./Ha.)	
a. Hatchling			335,600		
b. Fry			17,158		
c. Fingerling			16,869		
d. advance fingerling					
C2 Private Sector (000)			437,831		
a. Fry			437,831		
Others					
Fish import (Mt.)			3732		
Per capita fish production (kg)			3.8		
Per capita fish availability (kg) (Production+ Import)			3.9		
Households in Aquaculture			62,397		
Employment from Aquaculture			158,720		
Employment in Capture Fisheries			362,244		

Source (2072/74-2078/79):

DLS (2078/79). *Livestock and Fisheries Statistics of Nepal, 2078/78 (2021/22)*. DLS.

Source (2079/80):

Central Fisheries Promotion and Conservation Center. DLS.

Table 12: Pond Fish Production (FY 2007/08 to 2022/23, AD)

Particulars	Fiscal Year AD					
	2007/08	2008/09	2009/10	2010/11	2011/12	2012/13
No. of Pond	23884	23790	24418	26036	29270	32020
Pond's Area	10362	10308	10615	11195	10718	12338
Water Surface Area (Ha.)	6735	6700	6900	7277	7939	8020
Total Fish Production (Mt.)	24295	23780	24869	26941	29999	31221
Yield Kg / Ha	3607	3549	3604	3702	3779	3893

Table 12: Pond Fish Production (FY 2007/8 to 2022/23, AD)

Particulars	Fiscal Year AD					
	2013/14	2014/15	2015/16	2016/17	2017/18	2018/19
No. of Pond	34400	36666	39308	44725	45327	45936
Pond's Area	13231	14154	15283	17532	18310	19620
Water Surface Area (Ha.)	8600	9200	9934	11396	11889	12749
Total Fish Production (Mt.)	37427	41481	48543	55842	58433	62725
Yield Kg / Ha	4352	4576	4887	4900	4915	4920

Table 12: Pond Fish Production (FY 2007/8 to 2022/23, AD)

Particulars	Fiscal Year AD			
	2019/20	2020/21	2021/22	2022/23
No. of Pond	48369	50122	49862	50,326
Pond's Area	20732	21313	21443	22,684
Water Surface Area (Ha.)	13476	13854	14137	14,745
Total Fish Production (Mt.)	66906	73693	77320	82,161
Yield Kg / Ha	4964	5319	5469	5570

Source (2007/08-2021/22):

DLS (2078/79). Livestock and Fisheries Statistics of Nepal, 2078/78 (2021/22). DLS.

Source (2079/80):

Central Fisheries Promotion and Conservation Center. DLS.

Table 13: District-wise Fish Production (Pond Aquaculture), 2078/79 (2021/22)

District by province	District	Pond (No.)	Water surface area (Ha.)	Total fish production (Mt.)	Yield (Mt./Ha.)
Koshi	Taplejung	46	0.6	0.72	1.20
Koshi	Sankhuwashava	116	4	6	1.50
Koshi	Sulukhumbu	42	0.8	1.2	1.50
Koshi	Panchthar	91	7.8	8.5	1.09
Koshi	Ilam	178	18	38.6	2.14
Koshi	Terhathum	138	8	9.9	1.24
Koshi	Dhankuta	232	12	17.25	1.44
Koshi	Bhojpur	61	7	10.5	1.50
Koshi	Khotang	93	4.5	6.75	1.50
Koshi	Okhaldhunga	82	1.25	1.9	1.52
Koshi	Udayapur	645	132.5	596	4.50
Koshi	Jhapa	2261	360.24	1765	4.90
Koshi	Morang	5004	880	4309	4.90
Koshi	Sunsari	2058	582	3147	5.41
	Subtotal	11,047	2,019	9,919	4.91
Madhesh	Saptari	2940	965	5515	5.72
Madhesh	Siraha	2623	814	5621	6.91
Madhesh	Dhanusha	3052	1271	8960	7.05
Madhesh	Mahottari	2525	935	4965	5.31
Madhesh	Sarlahi	1430	558	3804	6.82
Madhesh	Rautahat	1345	601	4185	6.96
Madhesh	Bara	4571	1569	11635	7.42
Madhesh	Parsa	1832	560	2955	5.28
	Subtotal	20,318	7,273	47,640	6.55
Bagmati	Dolkha	15	1.5	2.25	1.50
Bagmati	Sindhupalchok	48	6.5	21.125	3.25
Bagmati	Rasuwa	27	0.19	0.6	3.16
Bagmati	Ramechhap	60	2.7	8.65	3.20
Bagmati	Sindhuli	302	21	89	4.24
Bagmati	Kavrepalanchok	78	8.07	32	4.00
Bagmati	Bhaktapur	46	17	41	2.41
Bagmati	Lalitpur	80	11	31	2.82
Bagmati	Kathmandu	70	14	29	2.07

District by province	District	Pond (No.)	Water surface area (Ha.)	Total fish production (Mt.)	Yield (Mt./Ha.)
Bagmati	Nuwakot	155	10	31	3.10
Bagmati	Dhading	216	18	66	3.67
Bagmati	Makawanpur	400	50	220	4.40
Bagmati	Chitawan	2050	1103	4638	4.20
	Subtotal	3,547	1,263	5,210	4.13
Gandaki	Manang				
Gandaki	Mustang	14	1.5	0.5	0.33
Gandaki	Gorkha	227	28	56.00	2.04
Gandaki	Lamjung	178	15.4	55.8	3.62
Gandaki	Tanahu	320	27	81.30	2.98
Gandaki	Kaski	268	36	119.34	3.32
Gandaki	Parbat	80	9.30	23.66	2.54
Gandaki	Shyanja	214	19	55	2.89
Gandaki	Maygdi	63	2.99	6.95	2.32
Gandaki	Baglung	66	7.4	17.0	2.30
Gandaki	Nawalparasi east	1117	245	993.00	4.05
	Subtotal	2,547	391	1,409	3.60
Lumbini	Palpa	144	7.1	8.6	1.21
Lumbini	Gulmi	56	1.02	2.48	2.43
Lumbini	Arghakhanchi	13	1.51	8.5	5.63
Lumbini	Nawalparasi west	1034	256.6	1241	4.84
Lumbini	Rupandehi	4856	1487	8545	5.75
Lumbini	Kapilvastu	895	710	2379	3.35
Lumbini	Dang	619	112	611	5.46
Lumbini	Banke	621	131	576.4	4.40
Lumbini	Bardiya	1530	625	2500	4.00
Lumbini	Rukum east				
Lumbini	Pyuthan	101	6	11	1.83
Lumbini	Rolpa	9	0.6	1.6	2.67
	Subtotal	9,878	3,338	15,885	4.76
Karnali	Dolpa				
Karnali	Mugu				
Karnali	Jumla				
Karnali	Humla				

District by province	District	Pond (No.)	Water surface area (Ha.)	Total fish production (Mt.)	Yield (Mt./Ha.)
Karnali	Kalikot				
Karnali	Rukum west	70	3.1	9	2.90
Karnali	Salyan	84	7	13	1.86
Karnali	Jajarkot	5	0.7	0.7	1.00
Karnali	Dailekh	70	2.5	3.2	1.28
Karnali	Surkhet	61	19	56	2.95
	Subtotal	290	32	82	2.54
Sudurpaschim	Bajhura	10	1	1.9	1.90
Sudurpaschim	Bajhang				
Sudurpaschim	Darchula				
Sudurpaschim	Achham				
Sudurpaschim	Doti	10	1.5	1.5	1.00
Sudurpaschim	Baitadi	15	1		
Sudurpaschim	Dadeldhura	20	2	4.5	2.25
Sudurpaschim	Kailali	1627	232	1,080	4.66
Sudurpaschim	Kanchanpur	1017	191	930	4.87
	Subtotal	2,699	429	2,018	4.71
	Total	50,326	14,745	82,161	5.57

Source:

Central Fisheries Promotion and Conservation Center. DLS.

LIVESTOCK BREEDING

Table 14: Semen Imported from Different Countries (1985 to 2023, AD)

Unit: Dose

Country	Year AD							
	1985	1986	1987	1988	1989	1991	1992	1993
NA						24000		
Australia	6000							
Canada				4000				
Denmark					3000			
Finland	6000							
France							1720	
Germany				10786				
India						16000	5000	16000
Japan								
New Zealand						10000	20000	
Switzerland	2000	2000						
USA			4000			24000		
Grand Total	14000	2000	4000	14786	3000	74000	26720	16000

Contd...

Table 14: Semen Imported from Different Countries (1985 to 2023, AD)

Unit: Dose

Country	Year AD							
	1994	1997	1998	1999	2000	2001	2003	2005
Australia								
Canada								
Denmark								
Finland								
France								
Germany								
India				19950	25957	7000	30000	32250
Japan		5000	4000					
New Zealand								
Switzerland								
USA	5000							
Grand Total	5000	5000	4000	19950	25957	7000	30000	32250

Contd...

Table 14: Semen Imported from Different Countries (1985 to 2023, AD)*Unit: Dose*

Country	Year AD							
	2007	2008	2009	2010	2011	2012	2013	2015
Australia								
Canada								
Denmark								
Finland								
France								
Germany								
India		5000	5000	10000		11400		
Japan								
New Zealand	5000		5000					
Switzerland								
USA					5000	9600	300	21000
Grand Total	5000	5000	10000	10000	5000	21000	300	21000

Contd...

Table 14: Semen Imported from Different Countries (1985 to 2023, AD)*Unit: Dose*

Country	Year AD							
	2017	2018	2019	2020	2021	2022	2023	Total
NA								24000
Australia								6000
Canada				4000	5500			13500
Denmark								3000
Finland								6000
France								1720
Germany								10786
India								183557
Japan								9000
New Zealand								40000
Switzerland								4000

Country	Year AD							
	2017	2018	2019	2020	2021	2022	2023	Total
USA	1500	3410	6525	5000				85335
Grand Total	1500	3410	6525	9000	5500			386898

Source (1985-2022):

DLS (2078/79). *Livestock and Fisheries Statistics of Nepal, 2078/79 (2021/22)*. DLS.

Source (2023):

NLBO (2079/80). *Annual Technical Report, 2078/79*. National Livestock Breeding Office, Pokhara. DLS.

Table 15: Semen Imported Data of Different Animal Species (1985 to 2023, AD)

Unit: Dose

Breed/Species	Year AD							
	1985	1986	1987	1988	1989	1991	1992	1993
Ayrshire	1000			1000				
Boer								
Brown Swiss	2000	2000		10786		2000		
Holstein Friesian	5000		4000	2000		21000	3340	
Jersey	6000			1000	3000	35000	17000	
Murrah						16000	5000	16000
Sexed Semen HF								
Sexed Semen Jersey								
Tarentaise							1380	
Haryana								
Grand Total	14000	2000	4000	14786	3000	74000	26720	16000

Contd...

Table 15: Semen Imported Data of Different Animal Species (1985 to 2023, AD)*Unit: Dose*

Breed/Species	Year AD							
	1994	1997	1998	1999	2000	2001	2003	2005
Ayrshire								
Boer								
Brown Swiss	5000							
Holstein Friesian		5000	4000					
Jersey				12510	21007	7000	30000	28350
Murrah				7440	4950			3900
Sexed Semen HF								
Sexed Semen Jersey								
Tarentaise								
Haryana								
Grand Total	5000	5000	4000	19950	25957	7000	30000	32250

Contd...

Table 15: Semen Imported Data of Different Animal Species (1985 to 2023, AD)*Unit: Dose*

Breed/Species	Year AD							
	2007	2008	2009	2010	2011	2012	2013	2015
Ayrshire								
Boer								3000
Brown Swiss								
Holstein Friesian			5000	5000	2500	2500		
Jersey	5000		5000		2500	2500		9000
Murrah				5000		11400		
Sexed Semen HF						2300	150	4000
Sexed Semen Jersey						2300	150	5000
Tarentaise								
Haryana		5000						
Grand Total	5000	5000	10000	10000	5000	21000	300	21000

Contd...

Table 15: Semen Imported Data of Different Animal Species (1985 to 2023, AD)*Unit: Dose*

Breed/Species	Year AD							Total
	2017	2018	2019	2020	2021	2022	2023	
Ayrshire								2000
Boer	1500							4500
Brown Swiss								21786
Holstein Friesian		3410	2500	5000				70250
Jersey			4025	4000	5500			198392
Murrah								69690
Sexed Semen HF								6450
Sexed Semen Jersey								7450
Tarentaise								1380
Haryana								5000
Grand Total	1500	3410	6525	9000	5500			386898

Source (1985-2022):DLS (2078/79). *Livestock and Fisheries Statistics of Nepal, 2078/79 (2021/22)*. DLS**Source (2023):**NLBO (2079/80). *Annual Technical Report, 2078/79*. National Livestock Breeding Office, Pokhara. DLS.**Table 16: National AI Coverage (FY 2075/76 to 2079/80)**

Particulars	2075/76	2076/77	2077/78	2078/79	2079/80	Remarks
A. Cow						
A1. Total estimated heads of breedable animal	1018855	1038336	1038336	1209041		
A2. Total AI	463707	426178	509896	550093	543412	
A3. Estimated conception rate (%)	56.1	56.1	56.1	56.1		
A4. Total no. of conceived animal	260232.4	239171	286052	308712		
A5. Ai coverage (%)	25.54	23.03	27.5	25.48	25.27	
B. Buffalo						

Particulars	2075/76	2076/77	2077/78	2078/79	2079/80	Remarks
B1. Total estimated no. of breedable animal	1345164	1381845	1381845	1630642		
B2. Total AI	154413	143114	181432	180626	116237	
B3. Estimated conception rate (%)	48	48	48.02	48.02		
B4. Total no. of conceived animal	74149	68723	87087			
B5. AI coverage (%)	5.51	4.97	6.3	5.32	10.32	
C. Goat						
C1. Total estimated no. of breedable animal		2456750	2456750			
C2. Total AI	4499	8427	10105			
C3. Estimated conception rate (%)	35	50.0	50.0			
C4. Total no. of conceived animal	1575	4214	5053			
C5. AI coverage (%)		0.17	0.20			

Source (2075/76-2078/79):

DLS (2078/79). *Livestock and Fisheries Statistics of Nepal, 2078/79 (2021/22)*. DLS

Source (2079/80):

NLBO (2079/80). *Annual Technical Report, 2078/79*. National Livestock Breeding Office, Pokhara. DLS.

Table 17: Semen Production, Distribution, and AI (FY 2050/51 to 2079/80)

Particulars	Fiscal Year BS						
	2050/51	2051/52	2052/53	2053/54	2054/55	2055/56	2056/57
Semen Production (Dose)	15115	13705	22797	18329	27586	27297	18480
Semen Distribution (Dose)	22448	29007	32702	35083	47935	50856	40332
Artificial Insemination (No.)	18815	17552	22906	25865	32817	32637	35248

Contd...

Table 17: Semen Production, Distribution and AI (FY 2050/51 to 2079/80)

Particulars	Fiscal Year BS						
	2057/58	2058/59	2059/60	2060/61	2061/62	2062/63	2063/64
Semen Production (Dose)	24373	32298	52174	65460	70051	101182	117687
Semen Distribution (Dose)	49675	64122	68311	71273	76937	84564	103875
Artificial Insemination (No.)	41165	56439	57683	60206	65440	73676	87441

Contd...

Table 17: Semen Production, Distribution and AI (FY 2050/51 to 2079/80)

Particulars	Fiscal Year BS						
	2064/65	2065/66	2066/67	2067/68	2068/69	2069/70	2070/71
Semen Production (Dose)	122932	139063	161322	250460	319389	400680	498129
Semen Distribution (Dose)	103766	122483	167233	195501	254481	361711	387644
AI (No.)	86649	98265	149261	195501	260166	374329	445254

Contd...

Table 17: Semen Production, Distribution and AI (FY 2050/51 to 2079/80)

Particulars	Fiscal Year BS					
	2071/72	2072/73	2073/74	2074/75	2075/76	2076/77
Semen Production (Dose)	625983	616634	646394	650055	665815	793884
Semen Distribution (Dose)	451312	400964	502719	559126	599036	738564
Artificial Insemination (No.)	487886	493133	574641	571771	622619	577719

Table 17: Semen Production, Distribution and AI (FY 2050/51 to 2079/80)

Particulars	Fiscal Year BS			Remarks
	2077/78	2078/79	2079/80	
Semen Production (Dose)	783461	801209	966312	
Semen Distribution (Dose)	778721	724610	755971	
Artificial Insemination (No.)	701433	718653	718476	

Source (2050/51-2078/79):DLS (2078/79). *Livestock and Fisheries Statistics of Nepal, 2078/79 (2021/22)*. DLS**Source (2079/80):**NLBO (2079/80). *Annual Technical Report, 2078/79*. National Livestock Breeding Office, Pokhara. DLS.

Table 18: Species-wise AI (FY 1995/96 to 2022/23, AD)*Unit: Number*

Particulars	Fiscal Year AD						
	1995/96	1996/97	1997/98	1998/99	1999/00	2000/01	2001/02
Cow	19361	21387	27430	27702	28769	32857	43980
Buffalo	3545	4478	5387	5469	6479	8308	12495
Goat							
Total	22906	25865	32817	33171	35248	41165	56475

Table 18: Species-wise AI (FY 1995/96 to 2022/23, AD)*Unit: Number*

Particulars	Fiscal Year AD						
	2002/03	2003/04	2004/05	2005/06	2006/07	2007/08	2008/09
Cow	46684	49068	54012	60184	71597	70503	79305
Buffalo	10999	11120	11428	13492	15844	16146	18960
Goat							
Total	57683	60188	65440	73676	87441	86649	98265

Table 18: Species-wise AI (FY 1995/96 to 2022/23, AD)*Unit: Number*

Particulars	Fiscal Year AD						
	2009/10	2010/11	2011/12	2012/13	2013/14	2014/15	2015/16
Cow	118492	148467	203288	284505	341334	383301	391709
Buffalo	30769	40689	56878	89824	103920	104609	97650
Goat							3774
Total	149261	189156	260166	374329	445254	487910	493133

Table 18: Species-wise AI (FY 1995/96 to 2022/23, AD)*Unit: Number*

Particulars	Fiscal Year AD						
	2016/17	2017/18	2018/19	2019/20	2020/21	2021/22	2022/23
Cow	444149	438144	463707	426178	509896	532297	543412
Buffalo	121460	128093	154413	143114	181432	177990	166237
Goat	9032	5534	4499	8427	10105	8366	8827
Total	574641	571771	622619	577719	701433	718653	718476

Source (1995/96-2021/22):DLS (2078/79): *Livestock and Fisheries Statistics of Nepal, 2078/79 (2021/22)*. DLS**Source (2079/80):**NLBO (2079/80). *Annual Technical Report, 2078/79*. National Livestock Breeding Office, Pokhara. DLS.**Table 19: AI Conception Rate (FY 2006/07 to 2022/23, AD)***Unit: Percent*

Species	Fiscal Year AD							
	2006/07	2007/08	2008/09	2009/10	2010/11	2011/12	2012/13	2013/14
Cow	52.44	56.03	54.69	56.15	56.65	56.45	56.12	56.05
Buffalo	43.14	54.93	48.00	46.76	48.28	48.34	48.04	48.00

Contd...

Table 19: AI Conception Rate (FY 2006/07 to 2022/23, AD)*Unit: Percent*

Species	Fiscal Year AD						
	2014/15	2015/16	2016/17	2017/18	2018/19	2018/19	2019/20
Cow	55.75	56.00	55.85	56.12	56.15	56.15	57.11
Buffalo	48.50	48.00	47.64	48.02	48.05	48.05	50.01
Goat							49.25

Table 19: AI Conception Rate (FY 2006/07 to 2022/23, AD)*Unit: Percent*

Species	Fiscal Year AD			Remarks
	2020/21	2021/22	2022/23	
Cow	56.12	56.12		
Buffalo	48.02	48.02		
Goat	50.00			

Source (2006/07-2021/22):DLS (2078/79): *Livestock and Fisheries Statistics of Nepal, 2078/79 (2021/22)*. DLS**Source (2079/80):**NLBO (2079/80). *Annual Technical Report, 2078/79*. National Livestock Breeding Office, Pokhara. DLS.**Table 20: Number of AI Centers and Inseminators**

Particulars	2079/80	Remarks
A. No. of AI Center	963	
A1. Government	373	
A2. Community	378	
A3. Private	212	
B. No. of Inseminator	2674	
B1. Government	722	
B2. Community	395	
B3. Private	1557	
C. No. of Active Inseminator	1952	
D. No. of District with AI Service	70	
D1. Regular AI Service	58	
D2. Casual/Seasonal AI Service	12	

Source: Annual Technical Report, 2079/80. National Livestock Breeding Office, Pokhara. DLS.

Table 21: District-wise AI FY 2079/780 (2022/23)*Unit: Number*

Province	District	Cow	Buffalo	Goat	Total
Nepal		544238	165502	8783	718523
Subtotal (Koshi)		157506	15887	1718	175111
Koshi	Bhojpur				
Koshi	Dhankuta	2375	482		2857
Koshi	Ilam	21520	791	86	22397
Koshi	Jhapa	53711	3425	753	57889
Koshi	Khotang				
Koshi	Morang	43421	3129	238	46788
Koshi	Okhaldhunga				
Koshi	Pachthar	2501	415	6	2922
Koshi	Sankhuwasabha	479	148		627
Koshi	Solukhumbu	27	12		39
Koshi	Sunsari	26597	3431	319	30347
Koshi	Taplejung	669	151		820
Koshi	Terathum	338	121		459
Koshi	Udayapur	5868	3782	316	9966
Subtotal (Madhesh)		90933	55383	1471	147787
Madhesh	Bara	11569	4965	165	16699
Madhesh	Dhanusa	12662	10182	53	22897
Madhesh	Mahottari	12119	7288	75	19482
Madhesh	Parsa	11051	6036	158	17245
Madhesh	Rautahat	9944	5826	703	16473
Madhesh	Saptari	9336	4687	54	14077
Madhesh	Sarlahi	13226	7759	130	21115
Madhesh	Siraha	11026	8640	133	19799
Subtotal (Bagamati)		155355	24526	1803	181684
Bagamati	Bhaktapur	8887	427	41	9355

Province	District	Cow	Buffalo	Goat	Total
Bagamati	Chitwan	54503	4154	400	59057
Bagamati	Dhading	1986	692	104	2782
Bagamati	Dolakha with Jiri Farm	737	458	97	1292
Bagamati	Kathmandu	23964	1765	532	26261
Bagamati	Kavre	27893	5111	66	33070
Bagamati	Lalitpur	10745	2915	96	13756
Bagamati	Makawanpur	20187	5405	183	25775
Bagamati	Nuwakot	2829	1388	72	4289
Bagamati	Ramechhap	879	216	52	1147
Bagamati	Rasuwa	760	547	14	1321
Bagamati	Sindhuli	1429	939	66	2434
Bagamati	Sindhupalchok	556	509	80	1145
Subtotal (Gandaki)		57262	29872	1303	88437
Gandaki	Baglung	1305	711	13	2029
Gandaki	Gorkha	773	1076	62	1911
Gandaki	Kaski	18397	13597	322	32316
Gandaki	Lamjung	1010	916	16	1942
Gandaki	Manang	74	72	29	175
Gandaki	Mustang	41	33	9	83
Gandaki	Myagdi	338	324	38	700
Gandaki	Nawalparasi-East	26598	5990	212	32800
Gandaki	Parbat	1379	755	251	2385
Gandaki	Syangja	1673	3031	106	4810
Gandaki	Tanahun	5674	3367	245	9286
Subtotal (Lumbini)		69152	31933	1686	102771
Lumbini	Arghakhachi	7820	5165	185	13170
Lumbini	Banke	2989	1968	30	4987
Lumbini	Bardia	3512	1876	198	5586
Lumbini	Dang	1942	1254	116	3312

Province	District	Cow	Buffalo	Goat	Total
Lumbini	E.Rukum				
Lumbini	Gulmi	1678	1783	88	3549
Lumbini	Kapilbastu	10281	3963	302	14546
Lumbini	Nawalparasi	9209	3347	192	12748
Lumbini	Palpa	1568	1411	22	3001
Lumbini	Pyuthan	286	239	35	560
Lumbini	Rolpa	131	237	12	380
Lumbini	Rupandehi	29736	10690	506	40932
Subtotal (Karnali)		2143	1685	314	4142
Dailekha	Dailekha	153	164	96	413
Dolpa	Dolpa	1			1
Humla	Humla				
Jajarkot	Jajarkot	27	27		54
Jumla	Jumla	217	41	53	311
Kalikot	Kalikot	9	23	22	54
Mugu	Mugu	3	3	6	12
Salyan	Salyan	134	150	125	409
Surkhet	Surkhet	1537	1156	12	2705
W.Rukum	W.Rukum	62	121		183
Subtotal (Sudurpaschim)		11887	6216	488	18591
Sudurpaschim	Achham				
Sudurpaschim	Baitadi				
Sudurpaschim	Bajhang	330	79		409
Sudurpaschim	Bajura	13	10	10	33
Sudurpaschim	Dadeldhura	218	150	43	411
Sudurpaschim	Darchula	4			4
Sudurpaschim	Doti	128	27		155
Sudurpaschim	Kailali	3810	1870	341	6021
Sudurpaschim	Kanchanpur	7384	4080	94	11558

MISCELLANEOUS

Table 22: No. of Animal Dead due to Disease Outbreak in FY 2079/80 (2022/23)

Province	District	Cattle	Buffalo	Goat	Sheep	Pig	Fowl	Duck
Nepal		53091	1051	733	11	19244	60887	2036
Subtotal (Koshi)		5801	84	136	1	8560	3028	98
Koshi	Bhojpur	173						
Koshi	Dhankuta	301		3			85	15
Koshi	Illam	1645	2	6		3	27	
Koshi	Jhapa	605		31	1	85	795	33
Koshi	Khotang	310	9	14			408	
Koshi	Morang	609	13	67		142	381	
Koshi	Okhaldhunga	201	4	7			102	
Koshi	Panchthar	506	2	3			1151	
Koshi	Sankhuwasabha	285						
Koshi	Solukhumbu	26	9				78	50
Koshi	Sunsari	456		4		8330		
Koshi	Taplejung	181	1					
Koshi	Tehrathum	142	2					
Koshi	Udayapur	361	42	1			1	
Subtotal (Madhesh)		1925	11	82		38	1043	24
Madhesh	Bara	1118	1	1		36	75	
Madhesh	Dhanusha	29		1			1	
Madhesh	Mahottari	98	5					
Madhesh	Parsa	40	4	19				
Madhesh	Rautahaut	245		8		1	280	
Madhesh	Saptari	56		1			191	
Madhesh	Sarlahi	271		8			14	
Madhesh	Siraha	68	1	44		1	482	24
Subtotal (Bagamati)		4017	130	189	2	8724	53964	1914
Bagamati	Bhaktapur	163		25		208	24592	522
Bagamati	Chitwan	178				2742		
Bagamati	Dhading	415	88	42		27	1092	
Bagamati	Dolakha	189	2	13			1044	3
Bagamati	Kathmandu	98	2			2670	8272	508
Bagamati	Kavre	653	19	71		1171	5151	881
Bagamati	Lalitpur	73	1	15		1859	6120	
Bagamati	Makawanpur	274						

Province	District	Cattle	Buffalo	Goat	Sheep	Pig	Fowl	Duck
Bagamati	Nuwakot	498	6	4			6920	
Bagamati	Ramechhap	329		5			315	
Bagamati	Rasuwa	32						
Bagamati	Sindhuli	725	11	11		47	458	
Bagamati	Sindhupalchok	390	1	3	2			
Subtotal (Gandaki)		2780	39	116		959	549	
Gandaki	Baglung	170	5					
Gandaki	Gorkha	789	2	78		7	74	
Gandaki	Kaski	417	12	2		834	4	
Gandaki	Lamjung	387						
Gandaki	Manang							
Gandaki	Mustang	9		4				
Gandaki	Myagdi	186				60		
Gandaki	Nawalpur	405	13	7		18	204	
Gandaki	Parbat	111					139	
Gandaki	Syanja	53	4	22		40	50	
Gandaki	Tanahun	253	3	3			78	
Subtotal (Lumbini)		10123	199	71	2	376	1738	
Lumbini	Arghakhanchi	671					232	
Lumbini	Banke	156	20	5	2	3	3	
Lumbini	Bardiya	103				25	9	
Lumbini	Dang	806	4	3		340	245	
Lumbini	Gulmi	411	29	24		8	151	
Lumbini	Kapilvastu	201	7	18			198	
Lumbini	Palpa	388					607	
Lumbini	Parasi	47	2	1			9	
Lumbini	Pyuthan	823	55	2			1	
Lumbini	Rolpa	3973	67					
Lumbini	Rukum East	2092	9				248	
Lumbini	Rupandehi	452	6	18			35	
Subtotal (Karnali)		7088	267	38	6	156	59	
Karnali	Dailekh	376	7					
Karnali	Dolpa	235						
Karnali	Humla	1364						
Karnali	Jajarkot	2293	54	28	6	26	42	

Province	District	Cattle	Buffalo	Goat	Sheep	Pig	Fowl	Duck
Karnali	Jumla							
Karnali	Kalikot	675	3	10				
Karnali	Mugu	66						
Karnali	Rukum West	551	17				17	
Karnali	Salyan	855	92					
Karnali	Surkhet	673	94			130		
Subtotal (Sudurpaschim)		21357	321	101		431	506	
Sudurpaschim	Acchham	1400	93	10			21	
Sudurpaschim	Baitadi	8000	18				4	
Sudurpaschim	Bajhang	3713	35			78	300	
Sudurpaschim	Bajura	544	73					
Sudurpaschim	Dadeldhura	2450	10	1			50	
Sudurpaschim	Darchula	1924	60	40			41	
Sudurpaschim	Doti	3173	20	42			50	
Sudurpaschim	Kailali	139	12			350		
Sudurpaschim	Kanchanpur	14		8		3	40	

Note: Reported on Veterinary Epidemiology Section, DLS in FY 2079/80

Source: Veterinary Epidemiology Section, Department of Livestock Services, Animal Disease Investigation and Control Division, DLS.

Table 23: Vaccines Produced by NVPL (FY 2074/75 to 2079/80)

Unit: Dose

S. N.	Vaccines	Fiscal Year BS				
		2074/75	2075/76	2076/77	2077/78	2078/79
1	PPR	7845000	8000900	8025000	8505000	9000250
2	Ranikhet F1	20068000	15000300	17404700	20010000	25000000
3	Gumboro	8241000	8003700	8005000	8010000	10010000
4	R2B / LaSota	8276500	5008500	5100000	5005000	2510000
5	Ranikhet I-2	1079800	1963800	1520000	1500000	1780000
6	HS + BQ (Combined)	951300	650000	740850	724000	935950
7	Classical Swine Fever	798820	650000	669500	703000	800000
8	HS Aerosol	50000				
9	Rabies	150000	120510	110000	151128	159100
	Total	47460420	39397710	41575050	44608128	50195300

Table 23: Vaccines Produced by NVPL (FY 2074/75 to 2079/80)

S.N.	Vaccines	Fiscal Year BS 2079/80	Remarks
1	PPR	10003250	
2	Ranikhet F1	25005000	
3	Gumboro / Fowlpox	10000000	
4	R2B / LaSota	2505000	
5	Ranikhet I-2	4000000	
6	HS + BQ (Combined)	977500	
7	Classical Swine Fever	1200000	
8	HS Aerosol	0	
9	Rabies	180700	
		53871450	

Source (2074/75-2078/79):

DLS (2078/79): *Livestock and Fisheries Statistics of Nepal, 2078/79 (2021/22)*. DLS.

Source (2079/80):

National Vaccine Production Laboratory, DLS.

Table 24: Feed Sample Tested Species-wise (FY 2075/76 to 2079/80)

Particulars	Fiscal Year BS					Remarks
	2075/76	2076/77	2077/78	2078/79	2079/80	
A. Poultry						Based on CP
No. of Tested Sample	556	2012	1126	1173	149	
Standard	491	1413	901	969	137	
Substandard	65	599	225	204	12	
B. Cattle						Based on CP
No. of Tested Sample	125	175	303	331	224	
Standard	104	126	174	197	131	
Substandard	21	49	129	134	93	
C. Fish						Based on Moisture content
No. of Tested Sample	63	99	226	288	399	
Standard	56	72	201	260	333	
Substandard	7	27	25	28	66	

Particulars	Fiscal Year BS					Remarks
	2075/76	2076/77	2077/78	2078/79	2079/80	
D. Pig						Based on Moisture content
No. of Tested Sample	7		50	44	12	
Standard	5		39	37	2	
Substandard	2		11	7	10	
E. Goat						Based on Moisture content
No. of Tested Sample	4	8	10	13	16	
Standard	2	6	6	9	4	
Substandard	2	2	4	4	12	
F. Dog/Cat						As Per Label Claim
No. of Tested Sample	5	6	38	62	42	
Standard	5	5	36	58		
Substandard		1	2	4		
G. Feed Raw Materials						As Per Label Claim
No. of Tested Sample	97	806	443	494	699	
Standard	74	738	377			
Substandard	23	68	66			
H. Forage Fodder	250	347	120	120	30	

Source (2075/76-2078/79):

DLS (2075/76-2078/79). Livestock and Fisheries Statistics of Nepal, 2078/79 (2021/22). DLS.

Source (2079/80):

National Animal Feed and Livestock Quality Management, DLS.

Table 25: Veterinary Drugs and Residues Testing (FY 2077/78 to 2079/80)

S. N.	Commodity	FY 2077/78 BS				FY 2078/79 BS			
		Total no. of Sample	No. of Samples tested	Test Standard Complied	Remarks	Total no. of Sample	No. of Samples Tested	Test Standard Complied	Remarks
1	Milk	791				894			
A	Drug Residue Test Using Rapid Test Kit		772	766			894	891	
B	Drug Residue Test Using ELISA Kit								
	Ciprofloxacin		82	81					
	Gentamicin		42	42					
	Oxytetracycline		40	37					
2	Meat	653				617			
A	Drug Residue Test Using Rapid Test Kit								
	Tetracycline		362	313			338	272	
	Aminoglycosides/ Macrolide/ Sulphonamides		324	205			295	137	
	Penicillin		217	158			78	62	
B	Drug Residue Test Using ELISA Kit								
	Colistin Sulphate		80	80					
	Tetracycline		41	41			123	112	
	Tylosin						80	80	
	Ciprofloxacin						80	67	
	Sulphonamides						205	205	
3	Veterinary Drugs	390	390	385		476	432	430	
4	Vaccines	75	75	74		31	31	27	
	Aminoglycosides/ Macrolide/ Sulphonamides		324	205			295	137	
	Penicillin		217	158			78	62	
B	Drug Residue Test Using ELISA Kit								
	Colistin Sulphate		80	80					
	Tetracycline		41	41			123	112	
	Tylosin						80	80	
	Ciprofloxacin						80	67	

Table 25: Veterinary Drugs and Residues Testing (FY 2077/78 to 2079/80)

S. N.	Commodity	FY 2079/80 BS			
		Total no. of Sample	No. of Samples tested	Test Standard Complied	Remarks
1	Milk	1156			
A	Drug Residue Test Using Rapid Test Kit		1156	1138	
B	Drug Residue Test Using ELISA Kit		12		
	Ciprofloxacin		12	12	
	Gentamicin		12	11	
	Oxytetracycline				
2	Meat	467			
A	Drug Residue Test Using Rapid Test Kit				
	Tetracycline		467	290	
	Aminoglycosides/Macrolide/ Sulphonamides		467	257	
	Penicillin				
B	Drug Residue Test Using ELISA Kit				
	Colistin Sulphate		41	41	
	Tetracycline		41	41	
	Tylosin		71	67	
	Ciprofloxacin		38	38	
	Sulphonamides				
3	Veterinary Drugs	266	266	266	
4	Vaccines	23	23	17	
	Aminoglycosides/Macrolide/ Sulphonamides				
	Penicillin				
B	Drug Residue Test Using ELISA Kit				
	Colistin Sulphate				
	Tetracycline				
	Tylosin				
	Ciprofloxacin				

Source (2077/78-2078/79):

DLS (2078/79). Livestock and Fisheries Statistics of Nepal, 2078/79 (2021/22). DLS

Source (2079/80):

Veterinary Standards and Drug Regulatory Laboratory. DLS.

Table 26: Testing of Veterinary Drugs and Vaccines Using Different Methods (FY 2077/78 to 2079/80)

S.N.	Particulars	Fiscal Year		
		2077/78	2078/79	2079/80
1	Quality Test of Biological (Vaccines)	Vaccine Tested	Vaccine Tested	Vaccine Tested
	Sterility Test	75	31	23
	Vacuum Test	53	19	57
	Antigen Rapid Test	47	21	10
	Safety Test	56	29	21
	PCR Test		3	
	HA/HI Test	4	30	2
2	Quality Test of Veterinary Drugs	Drugs Tested	Drugs Tested	Drugs Tested
	Average Weight Test	318	226	169
	Hardness Test	128	195	136
	Friability Test	184	266	169
	Disintegration Test	182	266	169
	Drug Assay	457	397	325
3	Antibiotic Residue in Meat Test (Meat Tested)	791	617	467
4	Antibiotic Residue in Milk Test (Milk Tested)	653	894	1156

Source (2077/78-2078/79):

DLS (2078/79). Livestock and Fisheries Statistics of Nepal, 2078/79 (2021/22). DLS

Source (2079/80):

Veterinary Standards and Drug Regulatory Laboratory. DLS.

Table 27: Import and Export Recommendations Provided by the DLS for Different Commodities (FY 2077/78 to 2079/80)

S. N.	Details	Unit	2077/78	2078/79	2079/80	Remarks
1	Broiler Parent Chicks Import	Number	1536244	885751	99075	
2	Layers Parent Chicks Import	Number	215004	108844	53953	
3	Grand Parent Chicks Import	Number	101640	63768	57181	
4	Purchase of Parent chicks from C.N/P.B./Quality	Number	349159	1304505		
5	Hatching Eggs Import	Number	430083	47160		
6	SPF Eggs Import	Number	157900	42500	46500	
7	Recommended no of Parent, Commercial Poultry Farms and Hatchery for Establishment	Number	40	7		
8	Total Vaccine Import	Dose in thousand	2087243	1792402	851837	
a.	Poultry Vaccine	Dose in thousand	2083365	1789019	837888	
b.	Other Veterinary Vaccine	Dose in thousand	3877	3383.34	13949.26	
9	Export of Goat Polyclonal Antibody	mg	3600	600	3000	

Source (2077/78-2078/79):

DLS (2078/79). Livestock and Fisheries Statistics of Nepal, 2078/79 (2021/22). DLS

Source (2079/80):

Veterinary Standards and Drug Regulatory Laboratory. DLS.

Table 28: Different Samples Received at CVL, VLs, and NADIL (FY 2074/75 to 2079/80)

S. N.	Species	Fiscal Year BS						Remarks
		2074/75	2075/76	2076/77	2077/78	2078/79	2079/80	
1	Poultry	14521	12374	11059	16204	9643	31335	
2	Cattle	3947	4962	5317	6833	7350	13526	
3	Sheep /Goat	2244	3904	3337	3818	13295	19024	
4	Pig	498	311	333	502	995	1386	
5	Dog	1074	1415	1477	480	554	601	
6	Rabbit	4						
7	Fish					6	2	
8	Horse	15			15	18		
9	Black Buck					2		
10	Wild Animal						5	
Total		22303	22966	21523	27852	31863	65879	

Table 29: Preliminary Diagnostic Testing Using Post-mortem for Dead Animal Species Received at CVL, VLs, and NADIL (FY 2074/75 to 2079/80)

S. N.	Species	Fiscal Year BS						Remarks
		2074/75	2075/76	2076/77	2077/78	2078/79	2079/80	
1	Poultry	19518	20792	13324	15202	14550	18135	
2	Cattle/Buffalo	18	30	24		11		
3	Sheep/Goat	77	68	95	13	126	171	
4	Pig	103	111	149	15	85	118	
5	Dog	147	36	41	69	33	65	
7	Wild Animal			4		2	5	
8	Rabbit					1	3	
9	Fish						2	
10	Cat						1	
Total		19863	21037	13637	15229	14808	18500	

Table 30: Different diseases diagnosed at CVL, VLs, and NADIL (FY 2074/75 to 2079/80)

S. N.	Disease	Fiscal Year BS						Remarks
		2074/75	2075/76	2076/77	2077/78	2078/79	2079/80	
1	Cattle/ Buffalo							
	FMD	89	83	52	58	37	26	
	Mastitis	1057	1269	1140	346	559	2102	
	Babesiosis	115	193	225	309	296	236	
	Anaplasmosis	51	24	60	63	146	35	
	Anthrax		2	3		2	2	
	Rabies	43	11	6	15	14	49	
	Trypanosomiasis	140	401	135	107	26	28	
	Hemorrhagic Septicemia	14	43	49			6	
	Theileriosis	45	84	91	95	38		
	LSDV				191	65	396	
	Toxoplasmosis						11	
2	Sheep / Goat							
	PPR	143	153	176	171	149	19	
	Rabies	3	5	7	7	4	9	
	Toxoplasmosis		156	22	2	127	90	
	Anaplasmosis						2	
	Babesiosis						11	
3	Pig							
	Classical Swine Fever	10	25	13	4	11	4	
	ASF					46	127	
	Anthrax	2	1	3			7	
	Rabies			1	2	2		
	PRRS				19			
4	Dog							
	Rabies	59	60	53	30	54	75	
	Babesiosis	13	13	27	39	2	18	
	Ehrlichiosis	11	4	2	22	3	20	
	Trypanosomiasis					2	7	
	Anaplasmosis			3	2	1	15	
5	Poultry							

S. N.	Disease	Fiscal Year BS						Remarks
		2074/75	2075/76	2076/77	2077/78	2078/79	2079/80	
	Ranikhet (ND)	421	408	245	586	317	627	
	Bird Flu LPAI	264	796	1025	294	478	979	
	Colibacillosis	1649	1530	916	1777	3139	3884	
	Salmonellosis	517	455	362	397	1361	525	
	Chronic Respiratory Disease	472	415	34	677	1757	1039	
	Gumboro	577	791	914	247	232		
	IBDV						1155	
	Total	5692	6922	5530	5226	8868	11504	

Source (2074/75-2078/79):

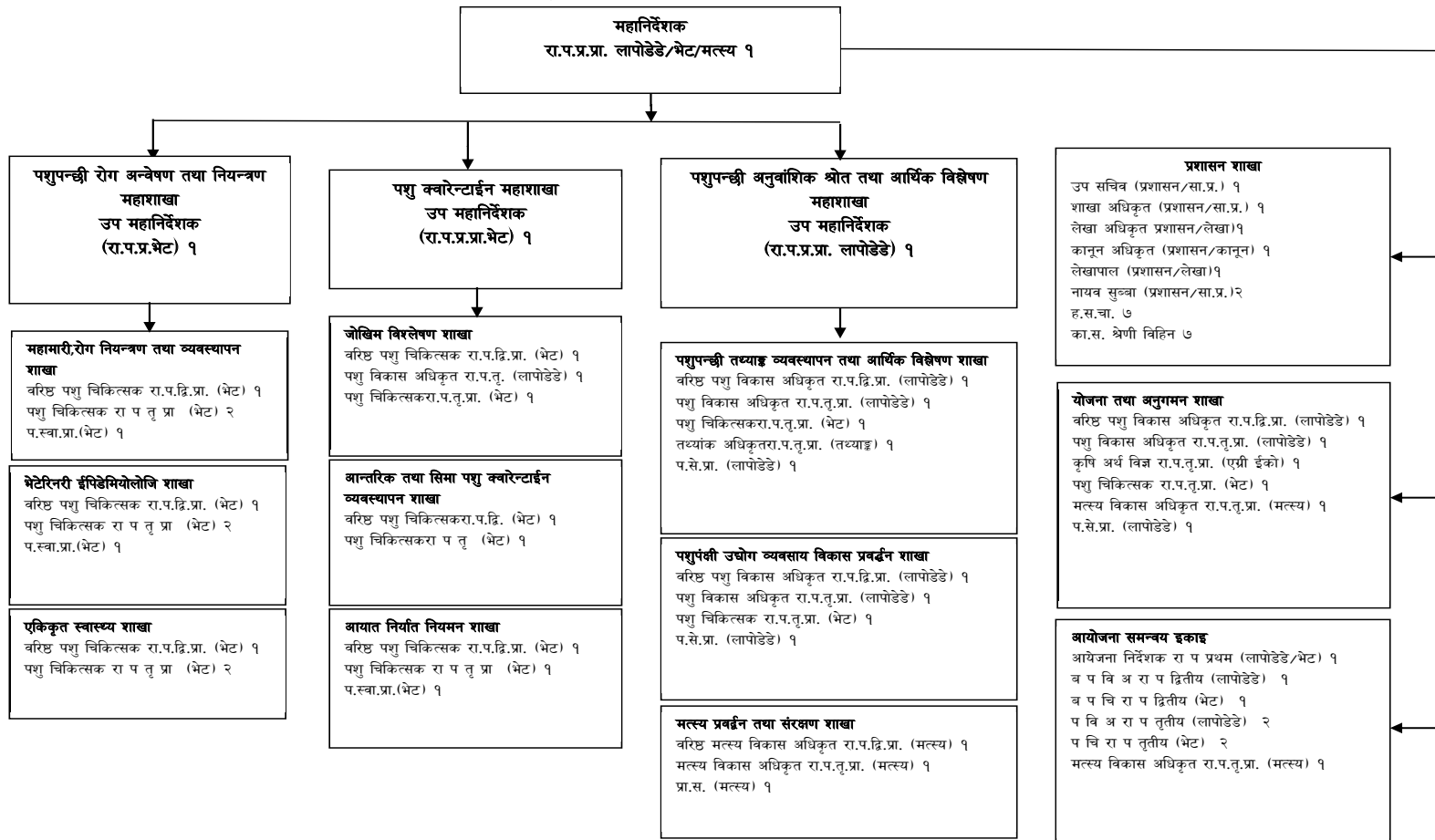
DLS (2078/79). Livestock and Fisheries Statistics of Nepal, 2078/79 (2021/22). DLS

Source (2079/80):

Central Veterinary Laboratory. DLS.

Annex 1: Organizational Structure of DLS.

नेपाल सरकार
कृषि तथा पशुपन्छी विकास मन्त्रालय
पशु सेवा विभागको सांगठनिक संरचना





Government of Nepal
Ministry of Agriculture and Livestock Development
Department of Livestock Services
Animal Genetic Resources and Economic Analysis Division
Livestock Statistics Management and Economic Analysis Section
Hariharbhawan, Lalitpur, Nepal